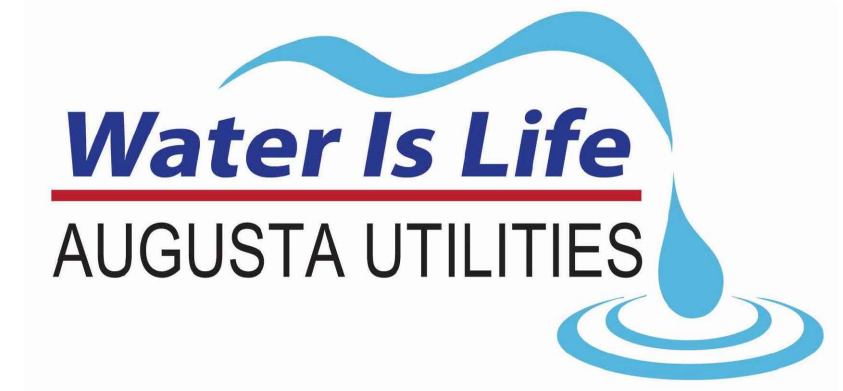
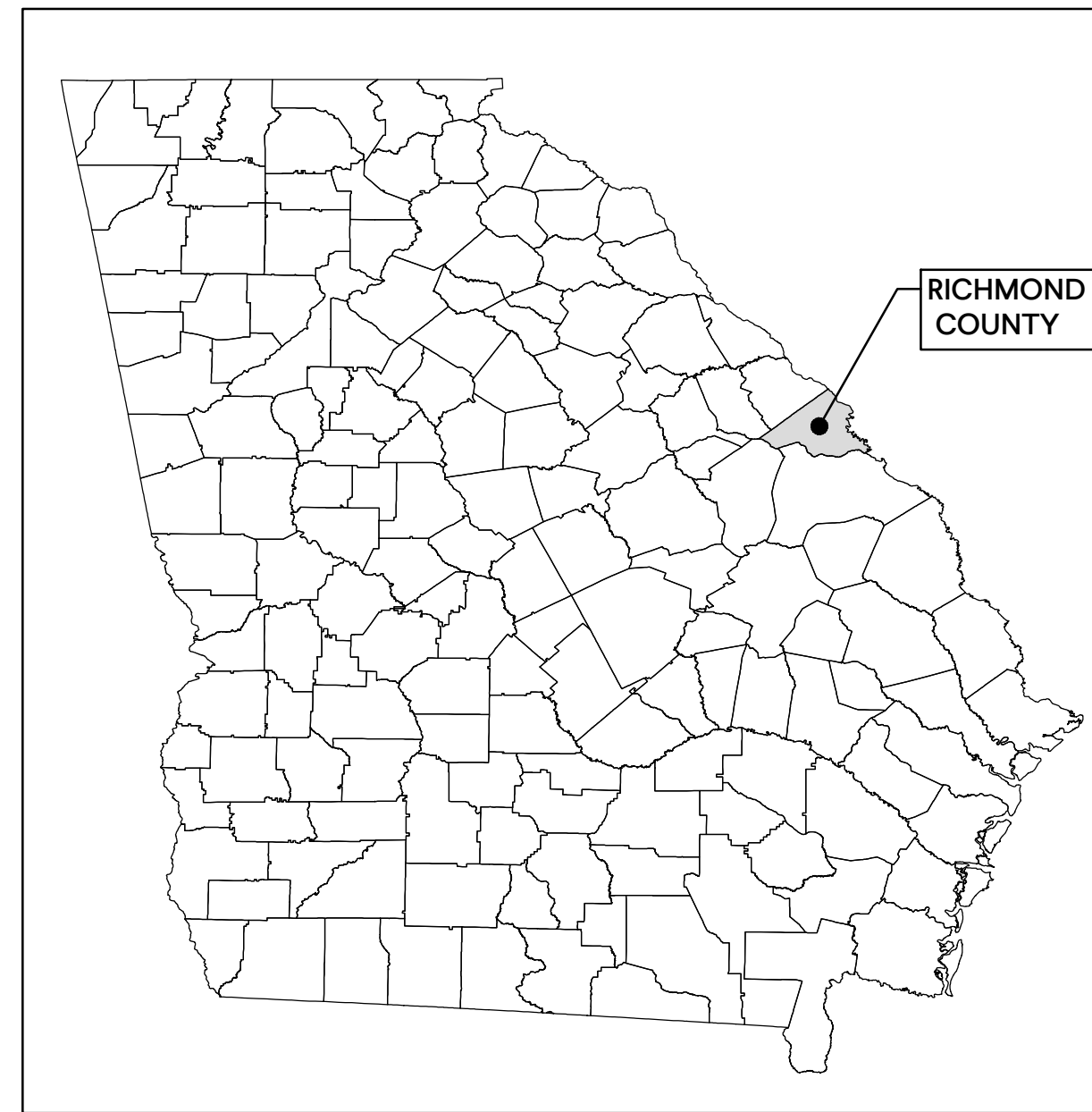


# GROUND WATER PLANT NO. 3 CLEARWELL LEAK REPAIRS

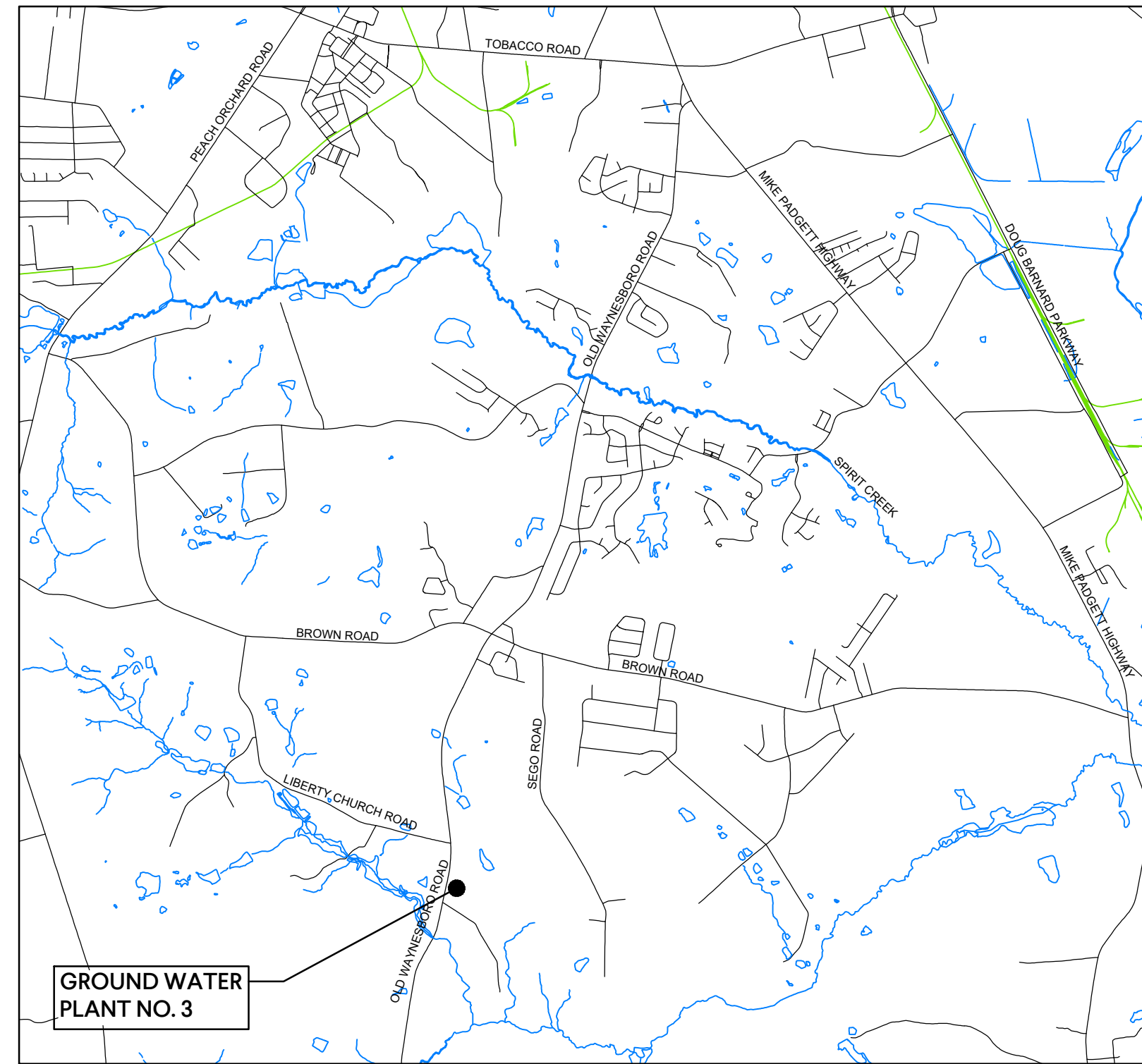


AUGUSTA, GA  
GMC PROJECT NUMBER #CAUG220004

AUGUSTA UTILITIES DEPARTMENT



LOCATION MAP:  
STATE OF GEORGIA



VICINITY MAP

MAY 2023

**ISSUED FOR BIDS**

AUGUSTA COMMISSION	
JORDAN JOHNSON	DISTRICT 1
STACY PULLIAM	DISTRICT 2
CATHERINE SMITH MCKNIGHT	DISTRICT 3
ALVIN MASON	DISTRICT 4
BOBBY WILLIAMS	DISTRICT 5
TONY LEWIS	DISTRICT 6
SEAN FRANTOM	DISTRICT 7
BRANDON GARRETT	DISTRICT 8
FRANCINE SCOTT	DISTRICT 9
WAYNE GUILFOYLE	DISTRICT 10

## INDEX OF DRAWINGS

G-001	TITLE SHEET
G-101	PROJECT SITE PLAN
A-101	GWP#3 VAULTS - FLOOR PLAN
A-102	GWP#3 CLEARWELL - ELEVATIONS
A-103	GWP#3 CLEARWELL - ELEVATIONS

GROUND WATER PLANT NO. 3  
CLEARWELL LEAK REPAIRS

AUGUSTA UTILITIES DEPARTMENT

GMC Project #CAUG220004

801 Broad St., Suite 900  
Augusta, GA 30901

T 706.303.3272

GMCNETWORK.COM

ISSUE DATE

12.02.2022

60% SUBMITTAL

90% SUBMITTAL

100% SUBMITTAL

ISSUED FOR BIDS

05.19.2023

PROJECT MANAGER:

MEF

ENGINEER:

DESIGNER:

DRAWN BY:

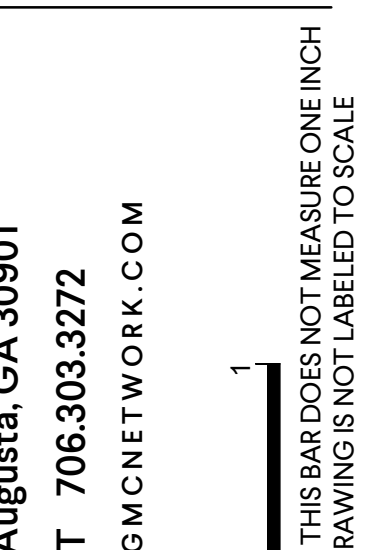


5/19/2023

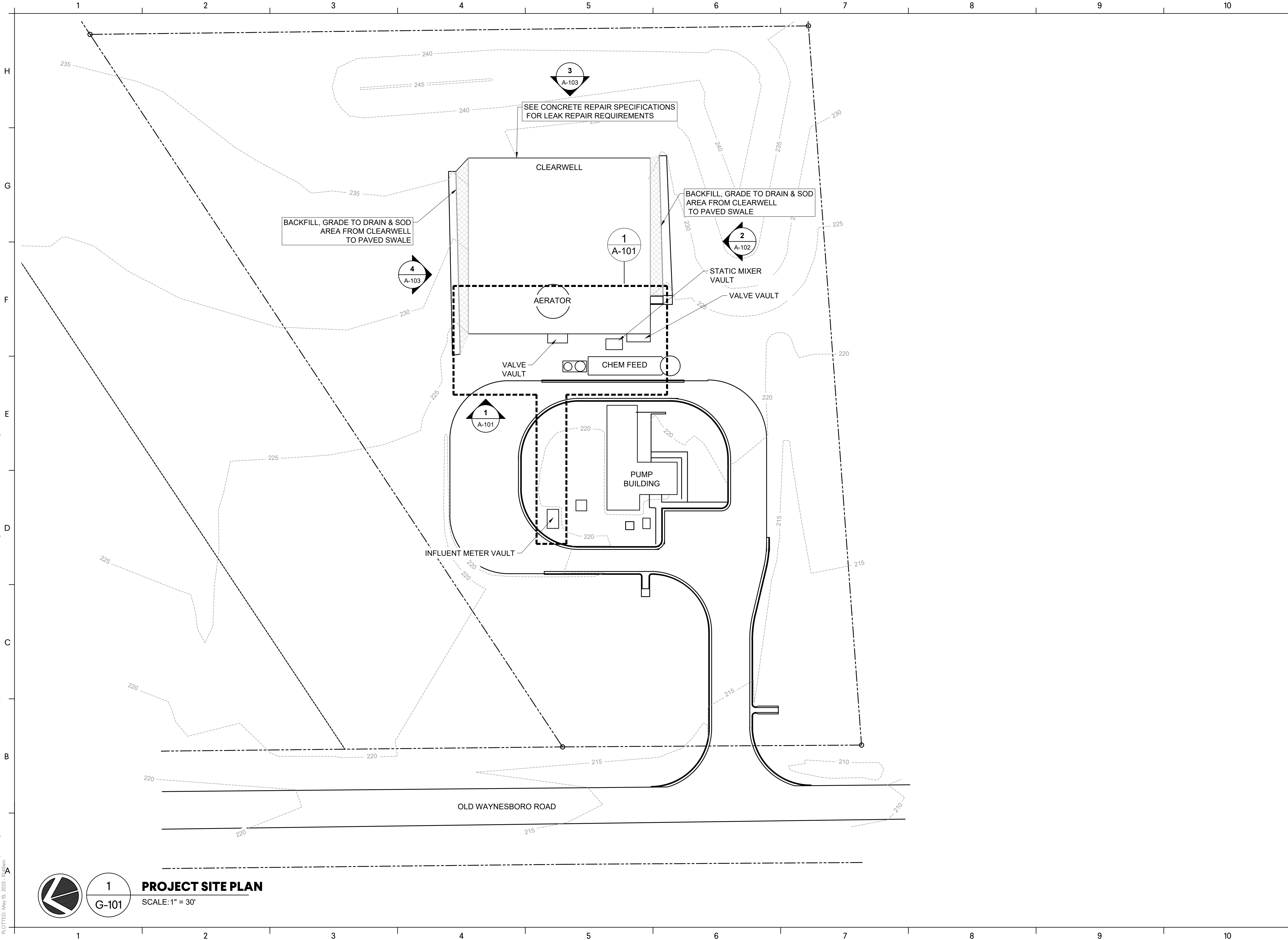


TITLE SHEET

G-001



DRAWING FILE: W:\Civil\CAUG Projects\Augusta Utilities Department\CAUG220004 - Water Treatment Improvements\Task 3 - GW Plant 3 Clearwell\01 DWG\PLANS\01 Big Drawings\01 GENERAL\G-101 PROJECT SITE PLAN.dwg  
 PLOTTED: May 19, 2023 - 8:11am



**1**  
**G-101**  
**PROJECT SITE PLAN**  
 SCALE: 1" = 30'

**PROJECT SITE PLAN**

**G-101**

**GMC**

801 Broad St., Suite 900  
 Augusta, GA 30901  
 T 706.303.3272  
 GMCNETWORK.COM

**GROUND WATER PLANT NO. 3**  
 CLEARWELL LEAK REPAIRS  
 AUGUSTA UTILITIES DEPARTMENT

**GMC Project #CAUG220004**

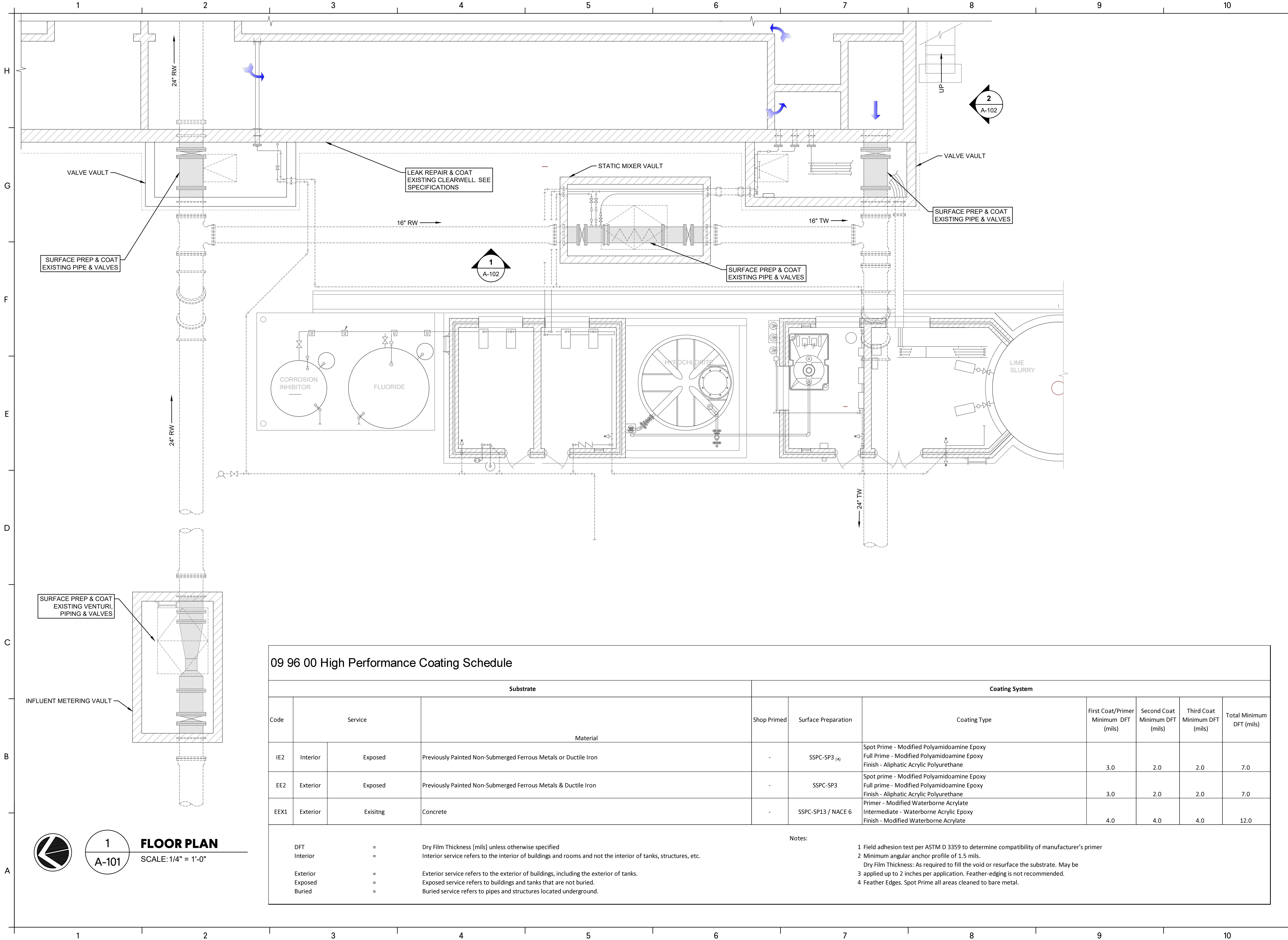
ISSUE	DATE
60% SUBMITTAL	12.02.2022
90% SUBMITTAL	
100% SUBMITTAL	
ISSUED FOR BIDS	05.19.2023
PROJECT MANAGER:	MC
ENGINEER:	MEF
DESIGNER:	
DRAWN BY:	

IF THIS BAR DOES NOT MEASURE ONE INCH  
 DRAWING IS NOT LABELED TO SCALE

5/19/2023

ANGELA MARIE COMBES  
 REGISTERED PROFESSIONAL ENGINEER  
 STATE OF GEORGIA

DRAWING FILE: W:\Civil\CAUG Projects\Augusta Utilities Department\CAUG220004 - Water Treatment Improvements\Task 3 - GW Plant 3 Clearwell\DWG\PLANS\01 Bid Drawings\07 ARCHITECTURAL\A-101 GWP#3 FLOOR PLAN.dwg  
 PLOT FILE: May 19, 2023 - 10:58am



**1**  
**A-101**  
**FLOOR PLAN**  
 SCALE: 1/4" = 1'-0"

09 96 00 High Performance Coating Schedule										
Substrate				Coating System						
Code	Service	Material	Shop Primed	Surface Preparation	Coating Type	First Coat/Primer Minimum DFT (mils)	Second Coat Minimum DFT (mils)	Third Coat Minimum DFT (mils)	Total Minimum DFT (mils)	
IE2	Interior	Exposed	Previously Painted Non-Submerged Ferrous Metals or Ductile Iron	-	SSPC-SP3 (4)	Spot Prime - Modified Polyamidoamine Epoxy Full Prime - Modified Polyamidoamine Epoxy Finish - Aliphatic Acrylic Polyurethane	3.0	2.0	2.0	7.0
EE2	Exterior	Exposed	Previously Painted Non-Submerged Ferrous Metals & Ductile Iron	-	SSPC-SP3	Spot prime - Modified Polyamidoamine Epoxy Full prime - Modified Polyamidoamine Epoxy Finish - Aliphatic Acrylic Polyurethane	3.0	2.0	2.0	7.0
EEX1	Exterior	Existing	Concrete	-	SSPC-SP13 / NACE 6	Primer - Modified Waterborne Acrylate Intermediate - Waterborne Acrylic Epoxy Finish - Modified Waterborne Acrylate	4.0	4.0	4.0	12.0

**DFT** = Dry Film Thickness [mils] unless otherwise specified  
**Interior** = Interior service refers to the interior of buildings and rooms and not the interior of tanks, structures, etc.  
**Exterior** = Exterior service refers to the exterior of buildings, including the exterior of tanks.  
**Exposed** = Exposed service refers to buildings and tanks that are not buried.  
**Buried** = Buried service refers to pipes and structures located underground.

**Notes:**  
 1 Field adhesion test per ASTM D 3359 to determine compatibility of manufacturer's primer  
 2 Minimum angular anchor profile of 1.5 mils.  
 Dry Film Thickness: As required to fill the void or resurface the substrate. May be applied up to 2 inches per application. Feather-edging is not recommended.  
 3 applied up to 2 inches per application. Feather-edging is not recommended.  
 4 Feather Edges. Spot Prime all areas cleaned to bare metal.

801 Broad St., Suite 900  
 Augusta, GA 30901  
 T 706.303.3272  
 GMCNETWORK.COM

**GROUND WATER PLANT NO. 3**  
 CLEARWELL LEAK REPAIRS  
 AUGUSTA UTILITIES DEPARTMENT

**GMC Project #CAUG220004**

**GWP#3 VAULTS FLOOR PLAN & COATING SCHEDULE**

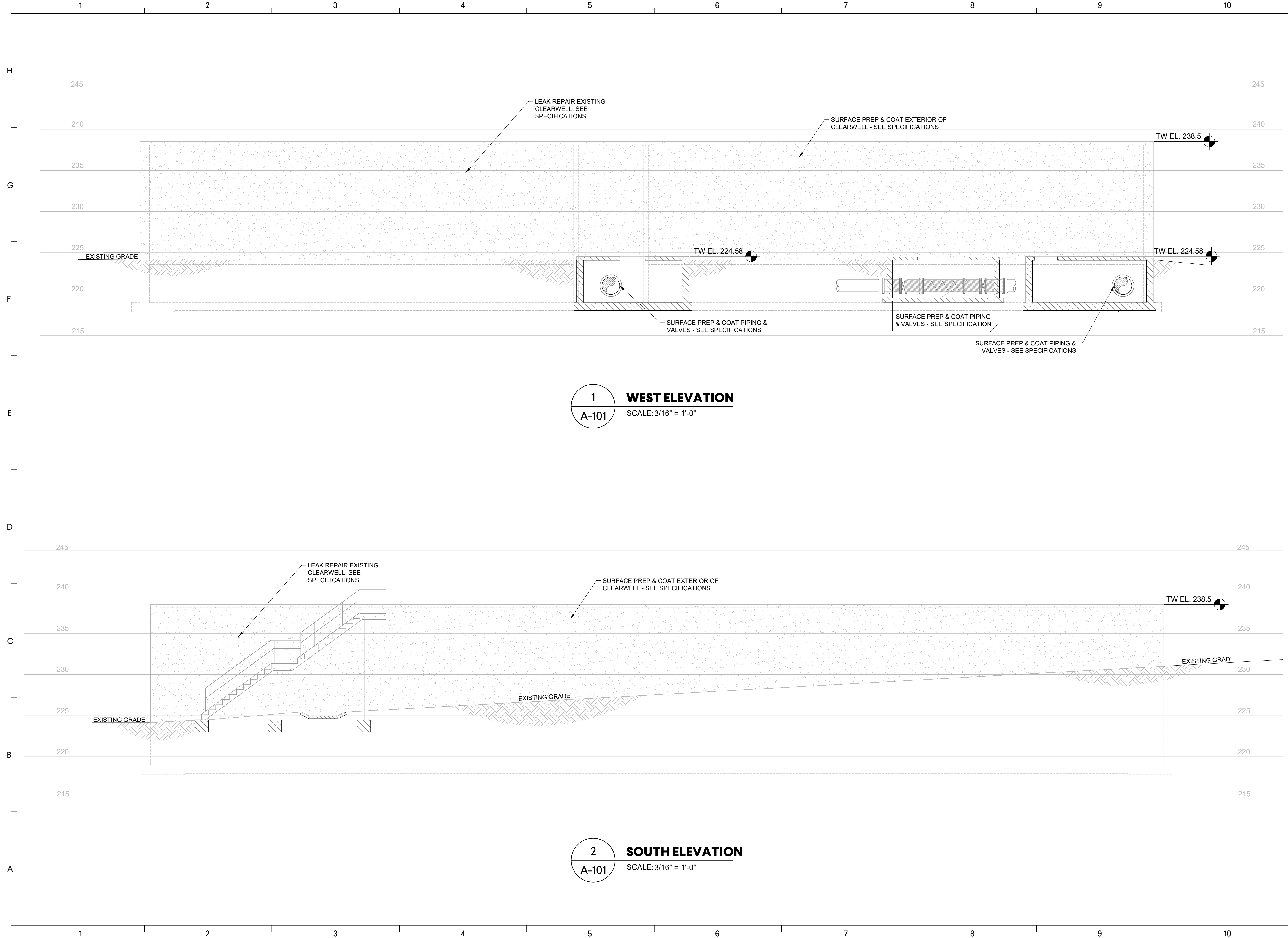
**A-101**

ISSUE	DATE
60% SUBMITTAL	12.02.2022
90% SUBMITTAL	
100% SUBMITTAL	
ISSUED FOR BIDS	05.19.2023
PROJECT MANAGER:	MC
ENGINEER:	MEF
DESIGNER:	
DRAWN BY:	

5/19/2023

IF THIS BAR DOES NOT MEASURE ONE INCH DRAWING IS NOT LABELED TO SCALE

DRAWING FILE: W:\Civil\CAUG Projects\Augusta Utilities Department\CAUG220004 - Water Treatment Improvements\Task 3 - GWP Plant 3 Clearwell\DWG\PLANS\01 Bid Drawings\07 ARCHITECTURAL\A-101 GWP#3 FLOOR PLAN.dwg  
 PLOTTED: May 19, 2023 - 10:54am



**1 WEST ELEVATION**  
 SCALE: 3/16" = 1'-0"

**2 SOUTH ELEVATION**  
 SCALE: 3/16" = 1'-0"

**GWP#3 CLEARWELL ELEVATIONS**

**A-102**

**GMC**

801 Broad St., Suite 900  
 Augusta, GA 30901  
 T 706.303.3272  
 GMCNETWORK.COM

GROUND WATER PLANT NO. 3  
 CLEARWELL LEAK REPAIRS  
 AUGUSTA UTILITIES DEPARTMENT

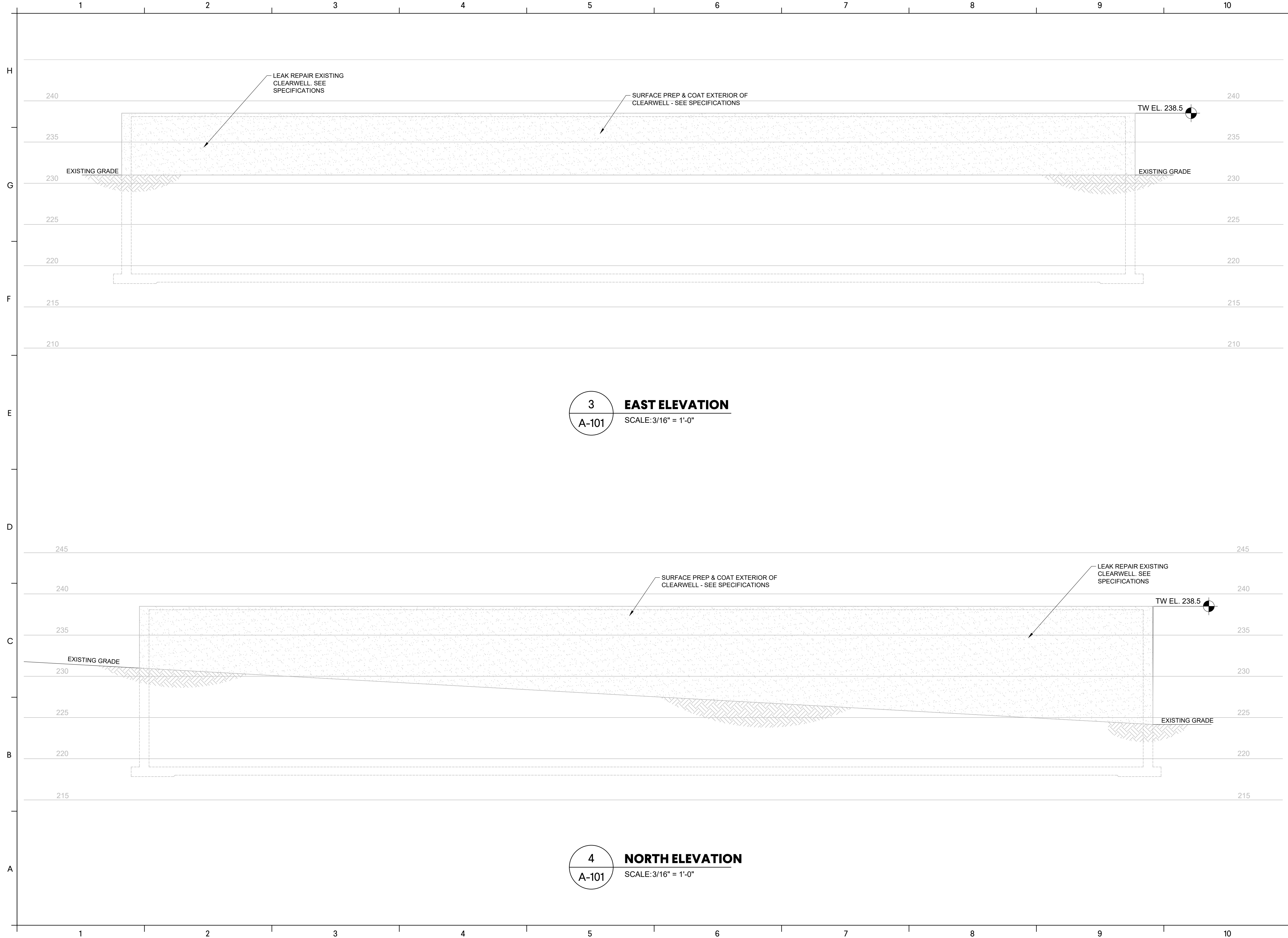
**GMC Project #CAUG220004**

ISSUE	DATE
60% SUBMITTAL	12.02.2022
90% SUBMITTAL	
100% SUBMITTAL	
ISSUED FOR BIDS	05.19.2023
PROJECT MANAGER:	MC
ENGINEER:	MEF
DESIGNER:	
DRAWN BY:	

IF THIS BAR DOES NOT MEASURE ONE INCH  
 DRAWING IS NOT LABELED TO SCALE

5/19/2023

DRAWING FILE: W:\Civil\CAUG Projects\Augusta Utilities Department\CAUG220004 - Water Treatment Improvements\Task 3 - GWP Plant 3 Clearwell\DWG\PLANS\01 Bid Drawings\07 ARCHITECTURAL\A-101 GWP#3 FLOOR PLAN.dwg  
 PLOT FILE: May 19, 2023 - 10:58am



**3 EAST ELEVATION**  
 SCALE: 3/16" = 1'-0"

**4 NORTH ELEVATION**  
 SCALE: 3/16" = 1'-0"

**GWP#3 CLEARWELL ELEVATIONS**

**A-103**

**GMC**

801 Broad St., Suite 900  
 Augusta, GA 30901  
 T 706.303.3272  
 GMCNETWORK.COM

**GMC Project #CAUG220004**

5/19/2023

ISSUE	DATE
60% SUBMITTAL	12.02.2022
90% SUBMITTAL	
100% SUBMITTAL	
ISSUED FOR BIDS	05.19.2023
PROJECT MANAGER:	MC
ENGINEER:	MEF
DESIGNER:	
DRAWN BY:	

**GROUND WATER PLANT NO. 3**  
 CLEARWELL LEAK REPAIRS  
 AUGUSTA UTILITIES DEPARTMENT

GEORGIA REGISTERED PROFESSIONAL ENGINEER  
 ANBELA MANE  
 5/19/2023

IF THIS BAR DOES NOT MEASURE ONE INCH DRAWING IS NOT LABELED TO SCALE