



Procurement Department

Mrs. Geri Sams, Director

CERTIFIED MAILED

**TO:** All Vendors  
Tywana Scott, Interim, Procurement Assurance Analyst  
Wes Byne, Utilities Department

**FROM:** Geri A. Sams   
Procurement Director

**DATE:** March 18, 2022

**SUBJ:** Revision to Drawings/Plans

**BID ITEM:** Bid Item #22-193 Augusta Canal-Bulkhead Gate Repair - for Augusta, GA – Utilities Department

**BID OPENING DATE: Monday, April 18, 2022 @ 3:00 p.m.**

### ADDENDUM NO. 1

This Addendum shall form a part of the referenced Bid Item #22-193 Augusta Canal-Bulkhead Gate Repair- for Augusta, GA – Utilities Department and any agreement entered into in connection therewith equally as if bound into the original document. Acknowledge receipt of all Addendums on Attachment “B” within the Specifications package.

#### REVISIONS TO DRAWING/PLANS:

Drawings/Plans for this project have been revised. If you purchased the original plans from Augusta Blue Print, your company will received a copy of this Addendum and plans from the Procurement Department or the Plan Room at no additional charges.

If your company has not purchased plans and would like to, please contact Augusta Blue Print at 706-722-6488.

**Please acknowledge addendum in your submittal**  
**END ADDENDUM**

#### ATTACHMENTS:

Revised Drawings/Plans

Suite 605 - 535 Telfair Street, Augusta Georgia 30901  
(706) 821-2422 - Fax (706) 821-2811

[www.augustaga.gov](http://www.augustaga.gov)

Register at [www.demandstar.com/supplier](http://www.demandstar.com/supplier) for automatic bid notification



Scan this QR code with your smartphone or camera equipped tablet to visit the Augusta, Georgia

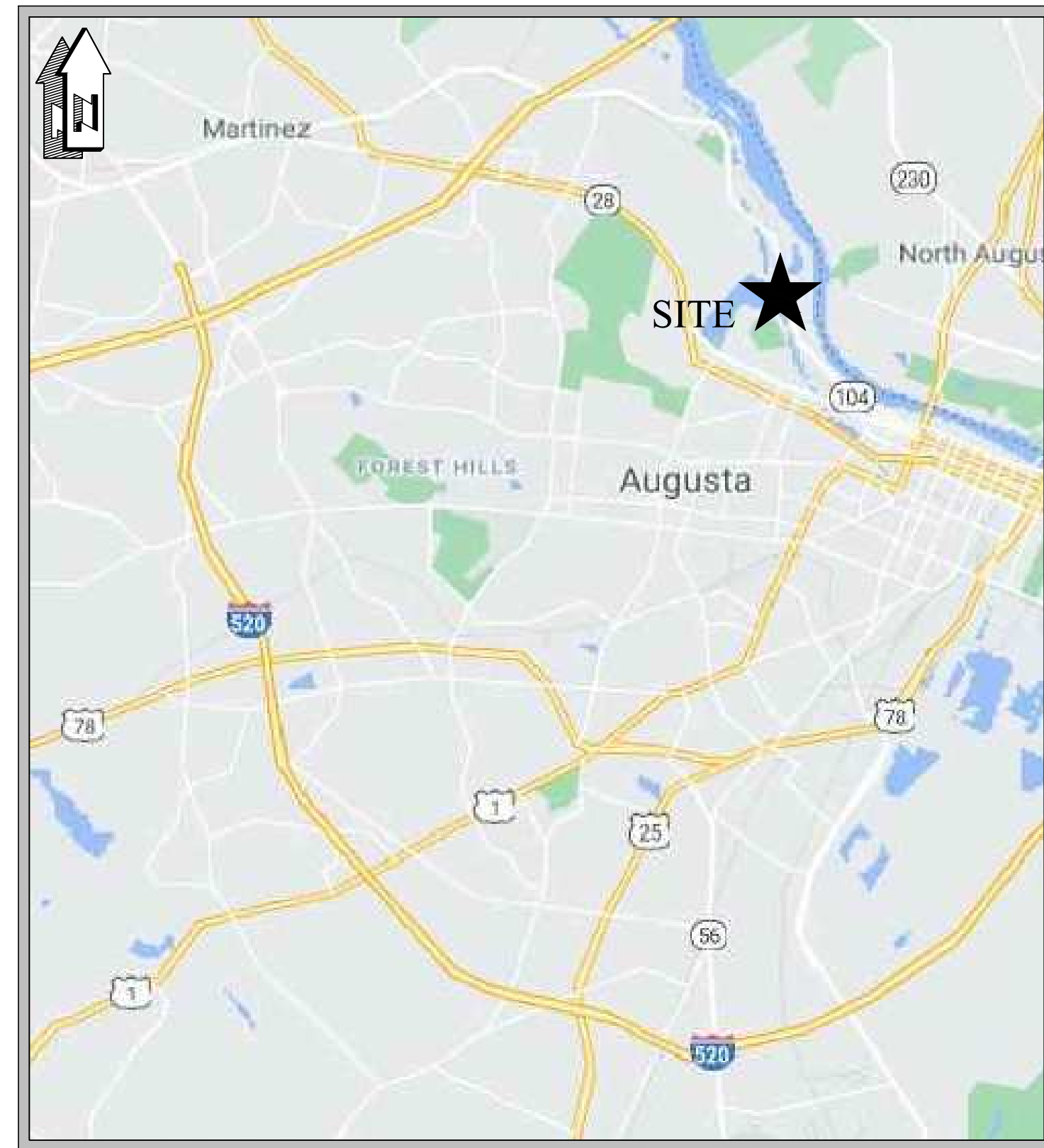
CONSTRUCTION PLANS FOR

# Augusta Canal Bulkhead Gate Repairs

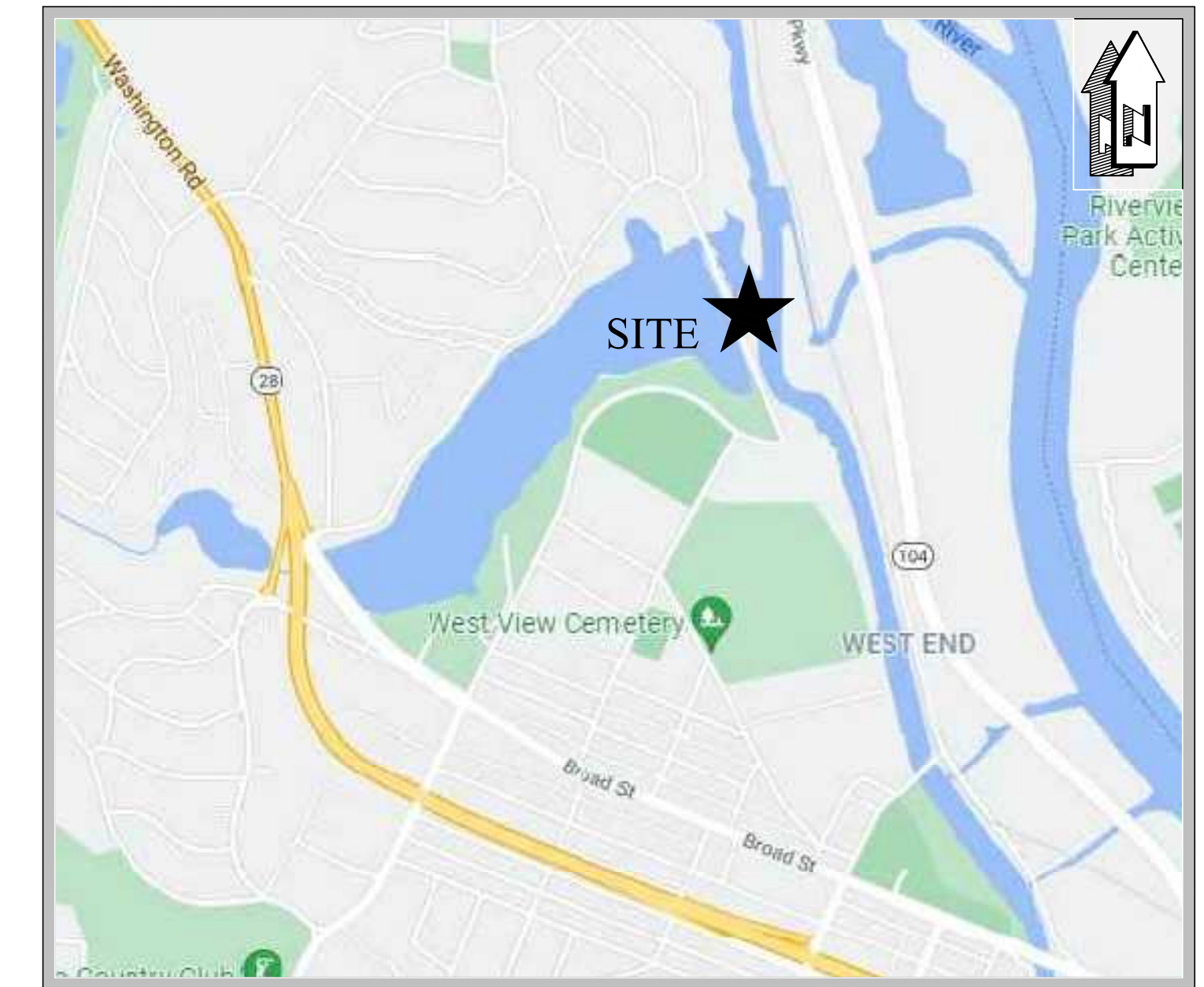
PREPARED FOR

## AUGUSTA RICHMOND COUNTY

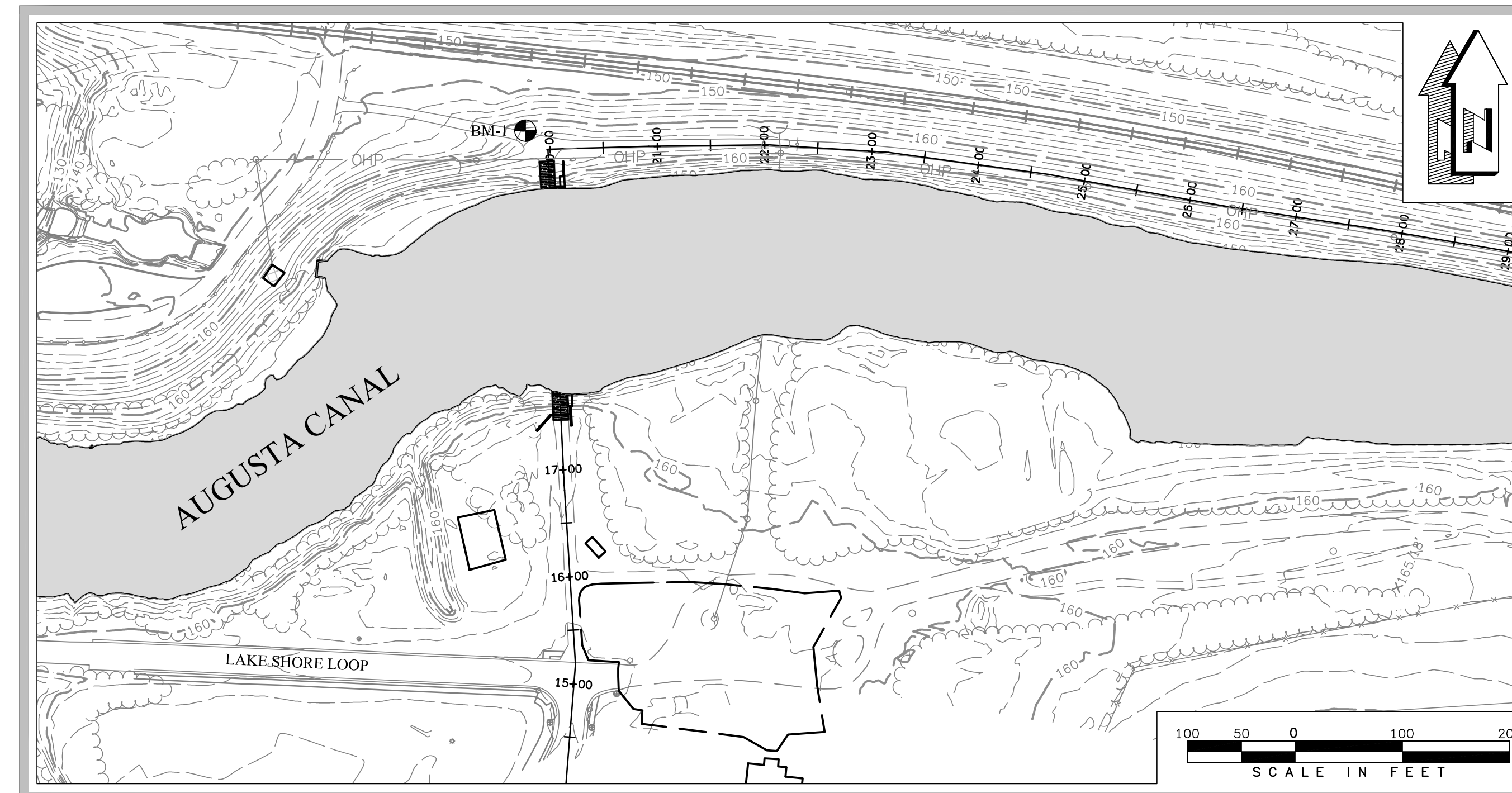
452 WALKER STREET, SUITE 200  
AUGUSTA, GA 30901



VICINITY MAP  
N.T.S.



LOCATION MAP  
N.T.S.



### MAYOR

HARDIE DAVIS, JR., MAYOR

### BOARD OF COMMISSIONERS

DISTRICT 1  
JORDAN JOHNSON

DISTRICT 2  
DENNIS WILLIAMS

DISTRICT 3  
CATHERINE SMITH MCNIGHT

DISTRICT 4  
ALVIN MASON

DISTRICT 5  
BOBBY WILLIAMS

DISTRICT 6  
BEN HASAN

DISTRICT 7  
SEAN FRANTOM

DISTRICT 8  
BRANDON GARRETT

DISTRICT 9  
FRANCINE SCOTT

DISTRICT 10  
JOHN CLARKE

### DIRECTOR OF AUGUSTA UTILITIES DEPARTMENT

DIRECTOR WES BYNE

PREPARED BY



ENGINEERS - PLANNERS - SURVEYORS

452 Ellis Street, Augusta, Georgia 30901  
Telephone 706-722-1588  
CranstonEngineering.com

9-24-2021

REVISION DATE 10-22-21

### PROJECT DATA:

- OWNER/DEVELOPER:  
AUGUSTA UTILITIES DEPARTMENT  
452 WALKER STREET, SUITE 200  
AUGUSTA GA, 30901  
PHONE: 706-821-1851  
24 HOUR CONTACT:  
NAME: CHAD HENDRIX  
PHONE: 706-833-6665
- RECEIVING STREAM: AUGUSTA CANAL
- ULTIMATE STREAM: SAVANNAH RIVER

### Sheet Index

Sheet Number	Sheet Title
C100	Cover
C101	Site Layout
C102	Site Access Plan
S100	Partial Isometric - 1
S101	Partial Isometric - 2
S102	Overall Plan
S201	Gate Elevations
S301	Overall Gate Sections & Elevations
S401	Details - 1
S402	Details - 2
S403	Details - 3

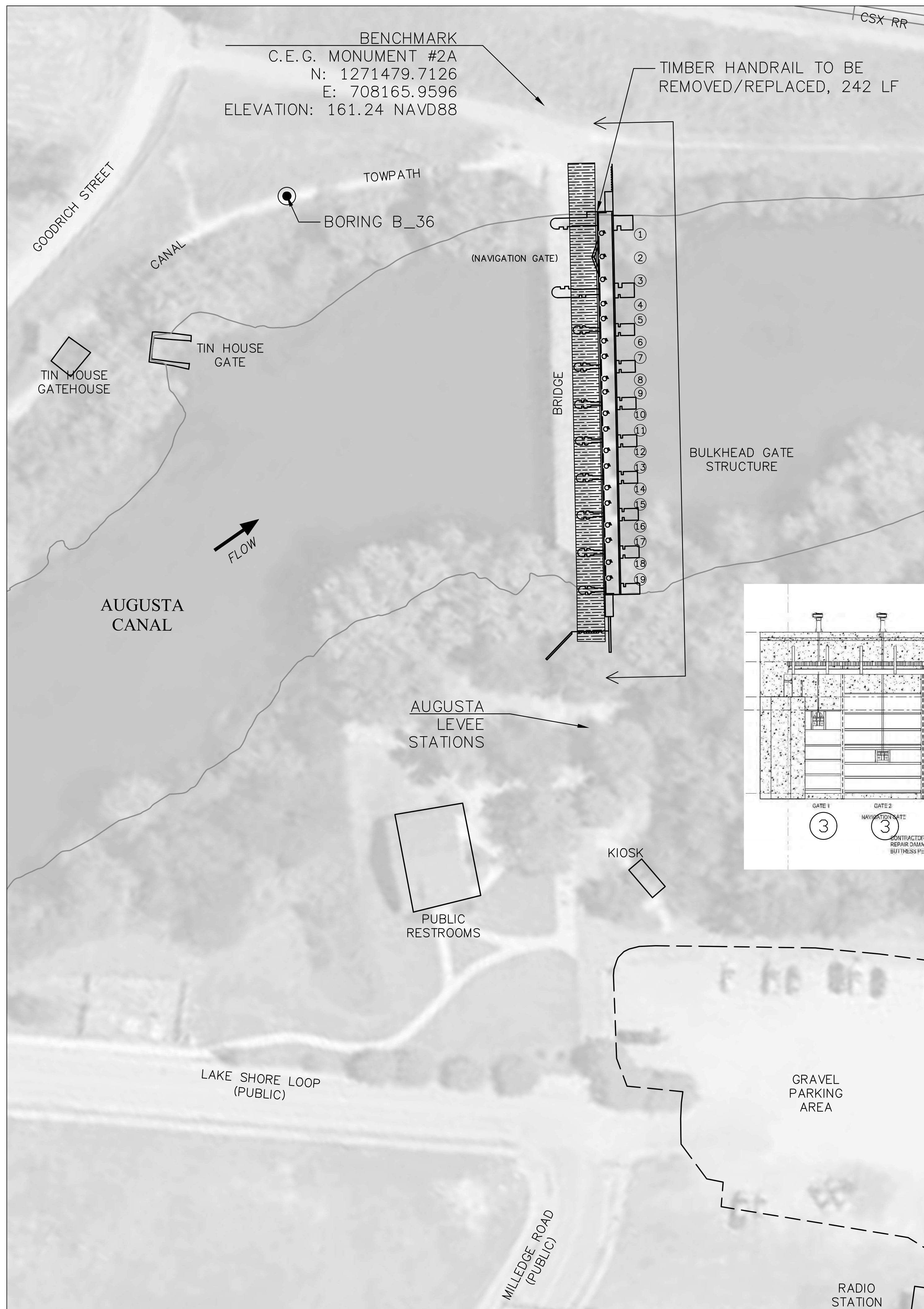
### BENCHMARK DATA

NAME	DESCRIPTION	PT #	NORTHING	EASTING	ELEVATION
BM-1	CEG MONUMENT	#2A	1271479.7126	708165.9596	161.24

- BENCHMARK DATA:  
1. COORDINATE SYSTEM IS STATE PLANE NAD 1983.  
2. ALL DISTANCES SHOWN ARE GROUND.

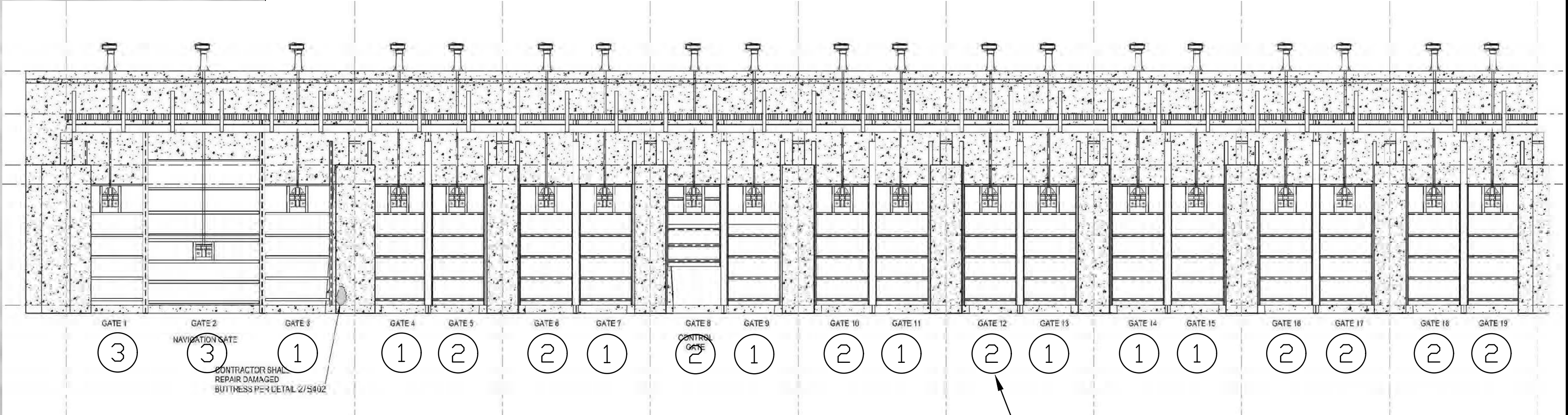


10-22-2021

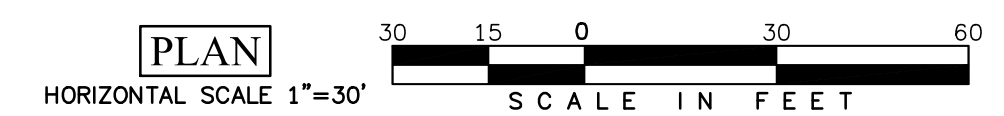


**PROJECT SCOPE:**

- BASE BID:**
1. REPLACE GATES 3, 4, 7, 9, 11, 13, 14 & 15.
  2. CLEAN & PAINT ALL GATES & FERROUS METAL COMPONENTS.
- ALTERNATE BID:**
1. REPLACE GATES 3 THROUGH 19.
  2. HOT DIP GALVANIZE NEW GATES 3 THROUGH 19.
  3. CLEAN & PAINT ALL GATES & FERROUS METAL COMPONENTS.
  4. GATE BLANKS TO BE USED DURING GATE REPLACEMENT OPERATIONS.
  5. PAINT SHALL CONFORM TO STEEL COATING REQUIREMENTS PROVIDED IN PERFORMANCE SPECIFICATIONS. COLOR SHALL BE PANTONE 342U "GREEN".
  6. CONTRACTOR TO DOCUMENT CONDITION OF EXISTING BRIDGE PRIOR TO AND AFTER CONSTRUCTION ACTIVITIES.
  7. CONTRACTOR TO REMOVE AND REPLACE EXISTING TIMBER HANDRAIL FOR GATE REPLACEMENT ACCESS. HANDRAIL SHALL BE RESET/REPAIRED OR REPLACED IN KIND.



- GATE CONDITIONAL REPAIR CATEGORIES**
- ① LESS THAN 23 MONTHS TO REPAIR OR REPLACE GATE
  - ② 24 TO 60 MONTHS TO REPAIR OR REPLACE GATE
  - ③ NO IDENTIFIED REPAIRS REQUIRED, REGULAR MAINTENANCE RECOMMENDED



**CRANSTON**  
ENGINEERING

ENGINEERS - PLANNERS - SURVEYORS

452 Ellis Street, Augusta, Georgia 30901  
Telephone 706-722-1588  
CranstonEngineering.com



REV #	DATE	PER AID COMMENTS DESCRIPTION
1	10/22/2021	

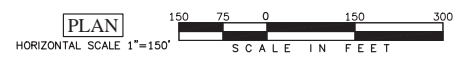
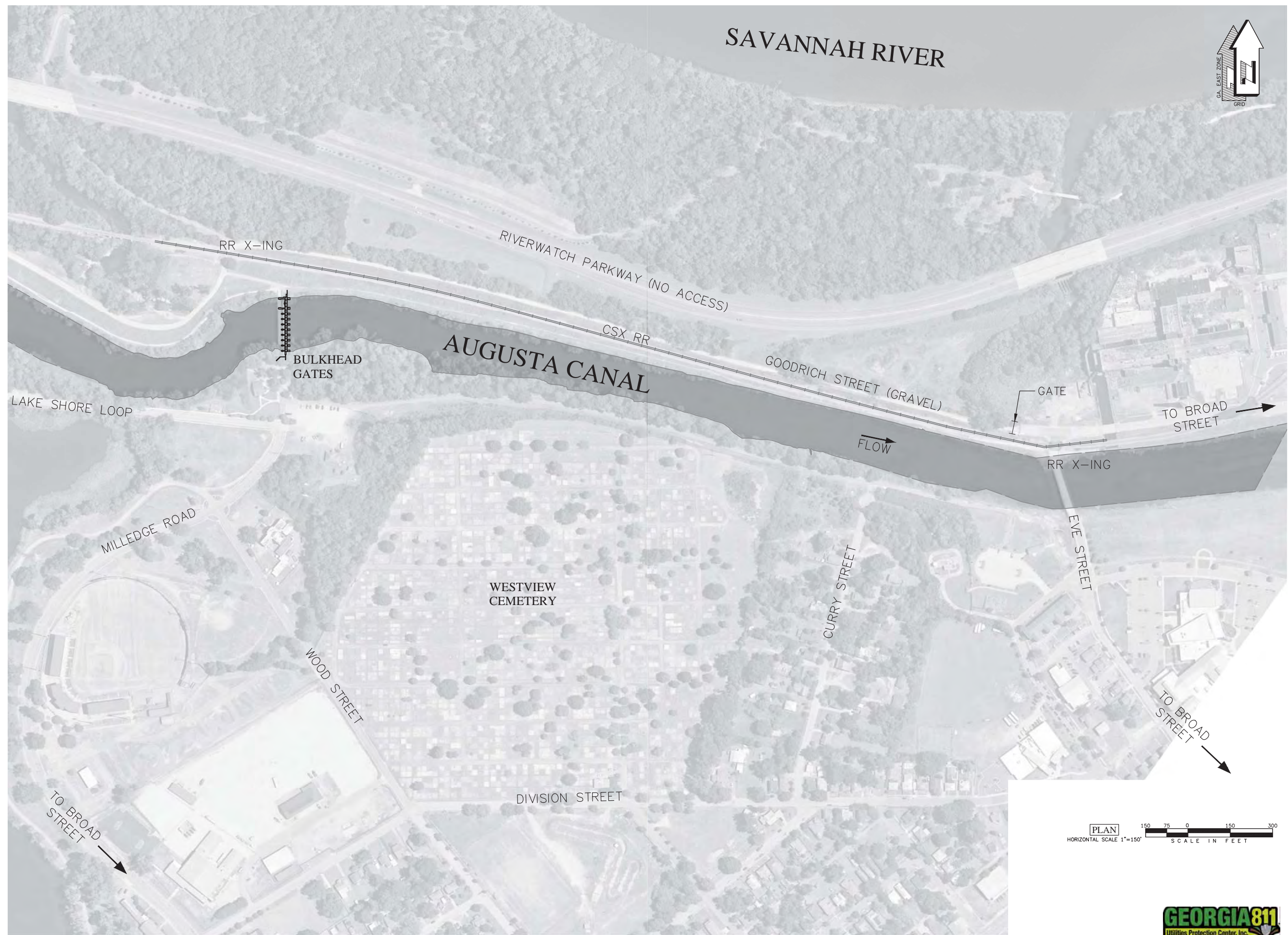
**Augusta Canal Bulkhead Gate Repairs**

**Site Layout**

DRAWN BY:	MAB
CHECKED BY:	MKO
APPROVED BY:	CMN
DATE:	9-24-2021
SCALE:	1" = 30'
JOB No.	2019-0578
DRAWING No.	

G:\AAA-ACTIVE JOBS\2019-0578\_AUGUSTA CANAL ANNUAL F.E.R.C. UPDATES 2020-2021\AAA - DRAWINGS\REFS\AUGUSTA CANAL BULKHEAD GATE REPAIRS.DWG 10/20/2021 3:28 PM

SAVANNAH RIVER



**CRANSTON**  
ENGINEERING

**ENGINEERS - PLANNERS - SURVEYORS**  
482 Ellis Street, Augusta, Georgia 30601  
Telephone 706-722-1886  
CranstonEngineering.com

REGISTERED PROFESSIONAL ENGINEER  
CARY MAX NAGLER  
NO. 30857  
9-24-2021

REV #	DATE	DESCRIPTION

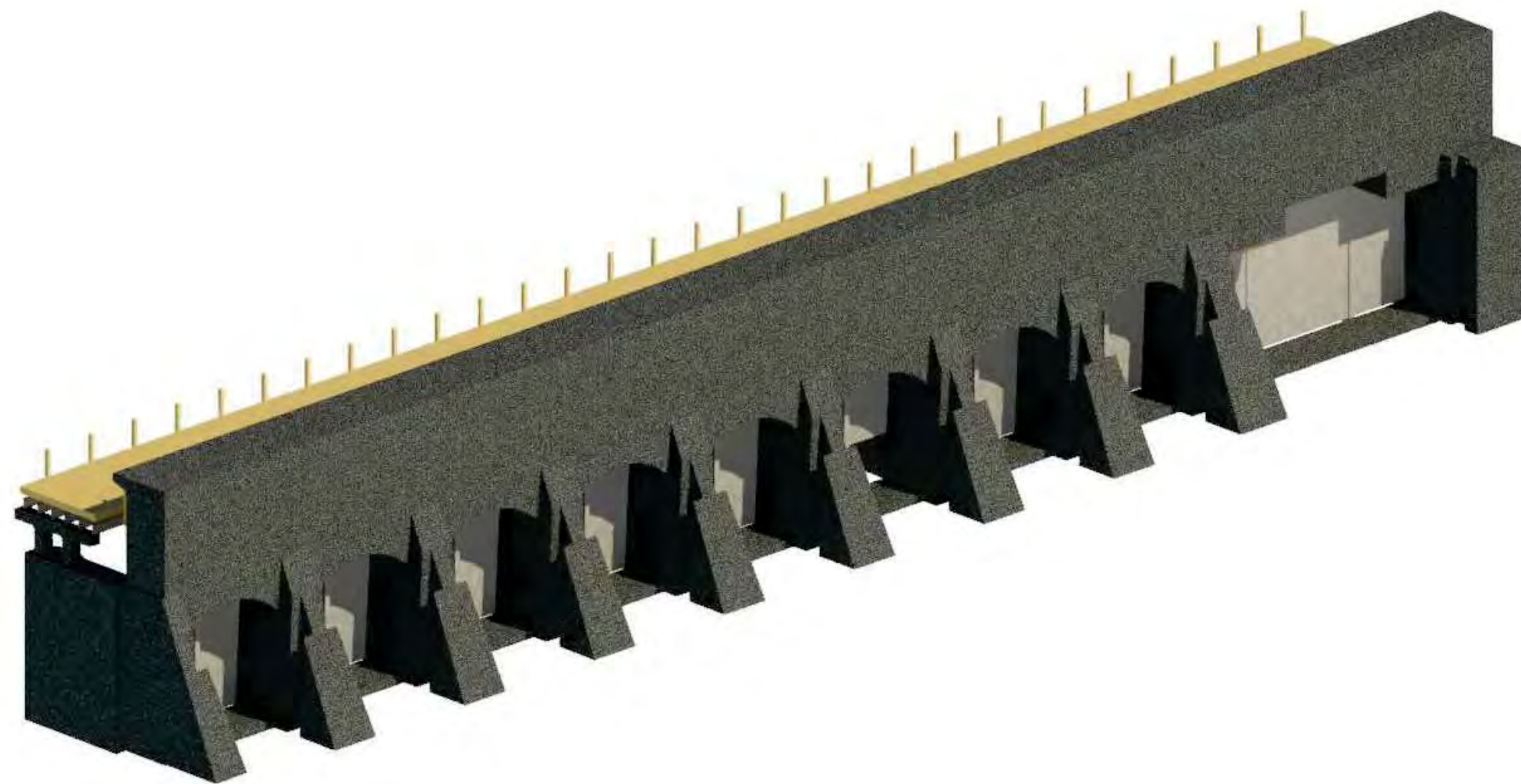
Augusta Canal Bulkhead Gate Repairs  
Site Access Plan

DRAWN BY:	MAB
CHECKED BY:	MKO
APPROVED BY:	CMN
DATE:	9-24-2021
SCALE:	1" = 150'
JOB No.	2019-0578
DRAWING No.	C102

G:\VAA-Active\_JOBS\2019\0578\_AUGUSTA CANAL ANNUAL F.E.R.C. UPDATES 2020-2021.V.A. - DRAWINGS\REFS\AUGUSTA CANAL BULKHEAD GATE REPAIRS.DWG 9/24/2021 3:34 PM



2 PARTIAL ELEVATION  
S100 SCALE: 3/8" = 1'-0"



1 PARTIAL ISOMETRIC - DOWNSTREAM  
S100 SCALE: 12" = 1'-0"

**CRANSTON**  
ENGINEERING  
ENGINEERS - PLANNERS - SURVEYORS  
452 Ellis Street, Augusta, Georgia 30901  
Telephone 706-722-1588  
CranstonEngineering.com

GEORGIA  
REGISTERED  
NO. 022447  
PROFESSIONAL  
ENGINEER  
DANIEL K. RICKABAUGH  
*D.K.R.*  
9/24/21

Rev.	Date	Description

AUGUSTA CANAL  
BULKHEAD GATE REPAIRS

PARTIAL ISOMETRIC - 1

DRAWN BY:	HJM
CHECKED BY:	DKR
APPROVED BY:	DKR
DATE:	09.24.2021
SCALE:	AS SHOWN
JOB No.	2019-0578
DRAWING No.	S100



1 PARTIAL ISOMETRIC - UPSTREAM  
NTS

Rev.	Date	Description

AUGUSTA CANAL BULKHEAD GATE REPAIRS	PARTIAL ISOMETRIC - 2
--	-----------------------

DRAWN BY:	HJM
CHECKED BY:	DKR
APPROVED BY:	DKR
DATE:	09.24.2021
SCALE:	AS SHOWN
JOB No.	2019-0578
DRAWING No.	S101

**GENERAL STRUCTURAL NOTES:**

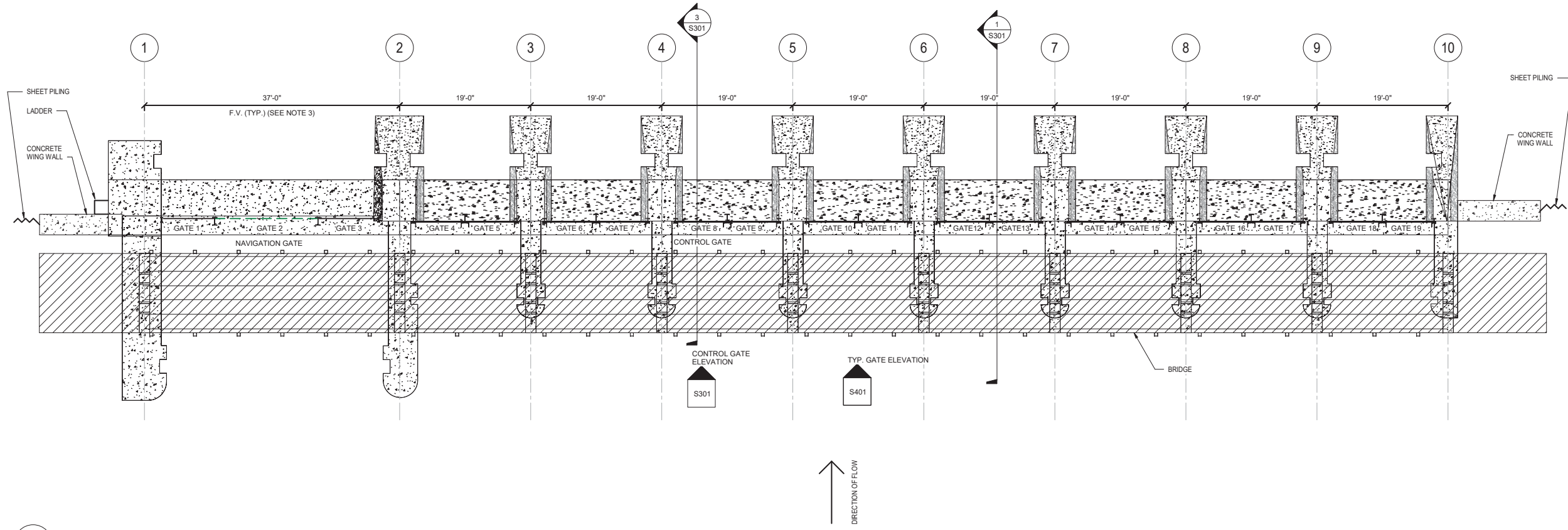
- 1) COORDINATE REPAIRS WITH "STRUCTURAL CONDITION ASSESSMENT AND STABILITY REPORT" BY CRANSTON ENGINEERING, DATED DECEMBER 29, 2020.
- 2) REMOVE AND REPLACE GATES 3 THROUGH 19 WITH DESIGNATED COMPONENTS SHOWN ON DETAIL SHEETS.
- 3) ALL DIMENSIONS AND CONDITIONS SHALL BE FIELD VERIFIED PRIOR TO FABRICATION OF NEW GATE COMPONENTS.
- 4) CONTRACTOR SHALL USE TECHNIQUES TO REMOVE GATES AND ASSOCIATED COMPONENTS THAT WILL MINIMIZE DAMAGE TO SOUND EXISTING CONCRETE.
- 5) FOR GATE CLEANING AND REMOVAL OF RUST AND CORROSION, METHODS USED SHALL BE DONE CAREFULLY IN ORDER TO NOT DAMAGE THE SUBSURFACE OF THE EXISTING STEEL.
- 6) UPON COMPLETION OF ALL CLEANING ACTIVITIES AND A FINAL CONDITION ASSESSMENT, FINAL AS-BUILT (100%) PLANS SHALL BE SUBMITTED TO THE GEORGIA HISTORIC PRESERVATION DIVISION (HPD). PLANS SHALL INCLUDE DESCRIPTION OF REPAIR ACTIVITIES BROKEN DOWN BY GATE OR COMPONENT WITH DETAILS OF THE FINAL FINISH OF EACH STEEL COMPONENT (PAINTED AND/OR GALVANIZED).

**CRANSTON**  
ENGINEERING

ENGINEERS - PLANNERS - SURVEYORS  
452 Ellis Street, Augusta, Georgia 30901  
Telephone 706-722-1588  
CranstonEngineering.com




Daniel K. Riccabuoni  
9/24/21



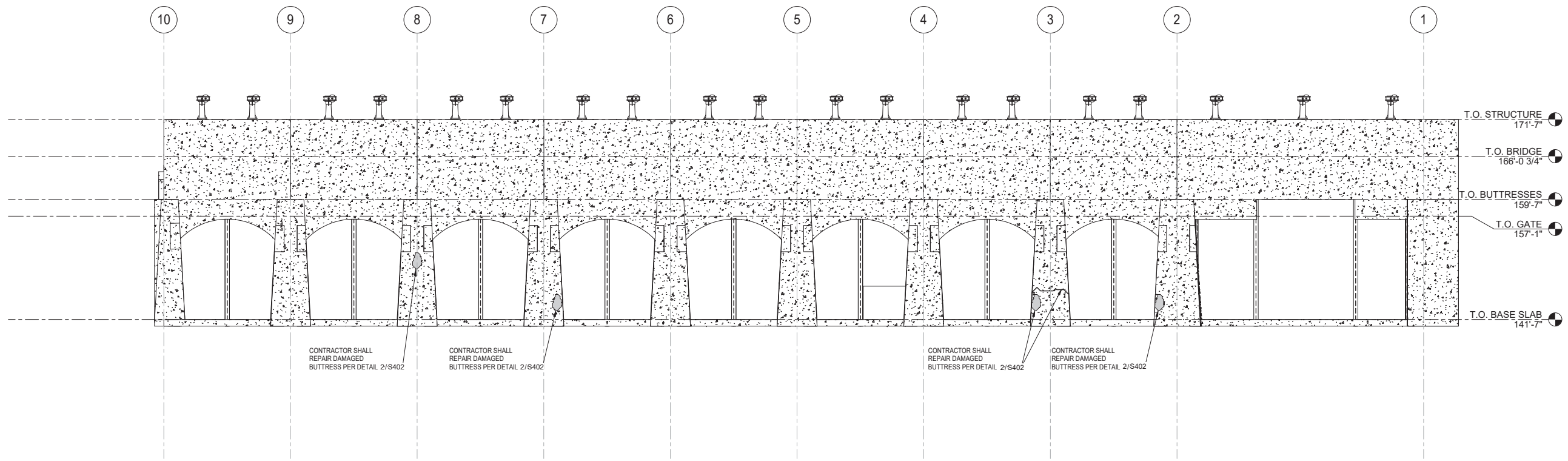
1 OVERALL PLAN  
S102 SCALE: 1/8" = 1'-0"

Rev.	Date	Description

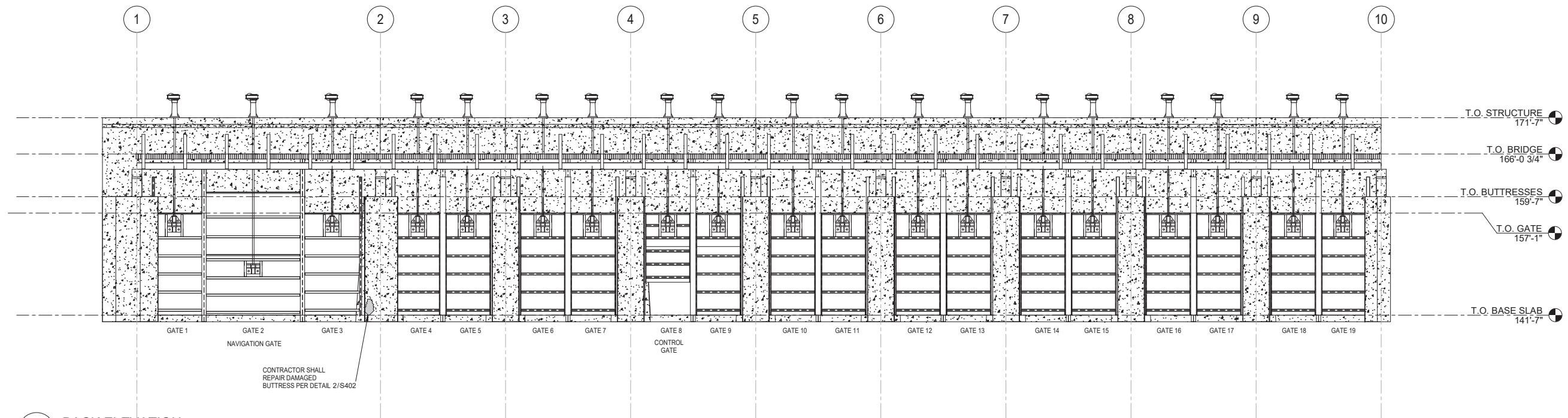
AUGUSTA CANAL  
BULKHEAD GATE REPAIRS

OVERALL PLAN

DRAWN BY:	HJM
CHECKED BY:	DKR
APPROVED BY:	DKR
DATE:	09.24.2021
SCALE:	AS SHOWN
JOB No.	2019-0578
DRAWING No.	S102



1 FRONT ELEVATION  
S201 SCALE: 1/8" = 1'-0"



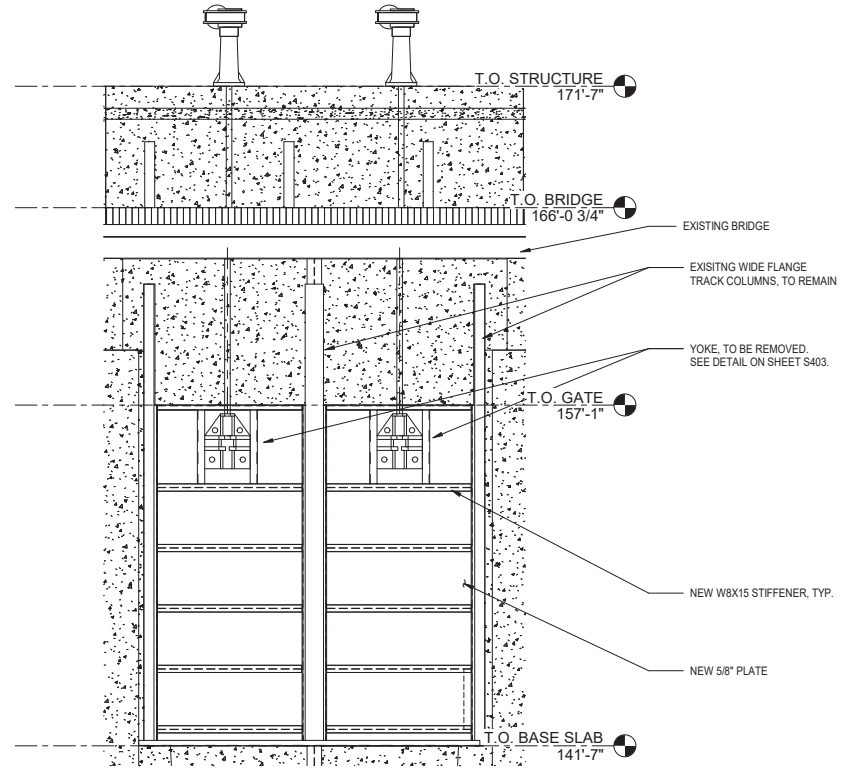
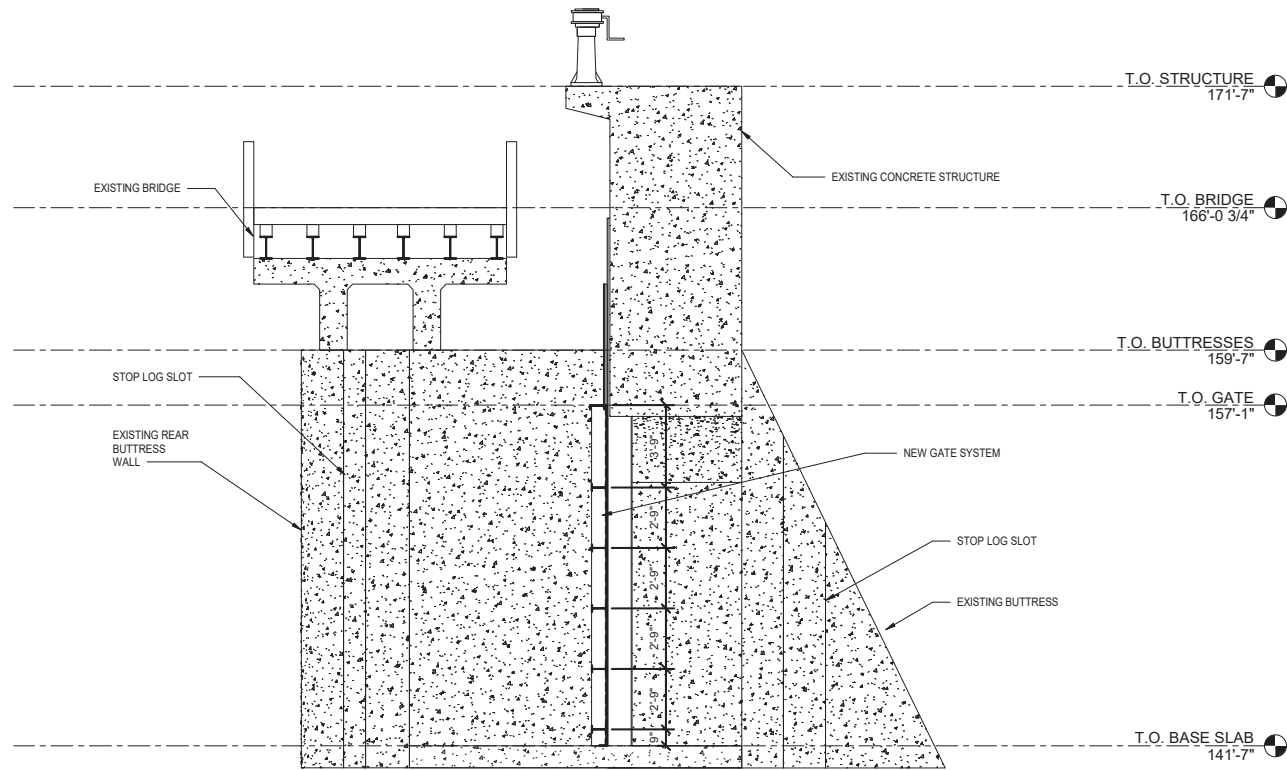
2 BACK ELEVATION  
S201 SCALE: 1/8" = 1'-0"

Rev.	Date	Description

AUGUSTA CANAL  
BULKHEAD GATE REPAIRS  
GATE ELEVATIONS

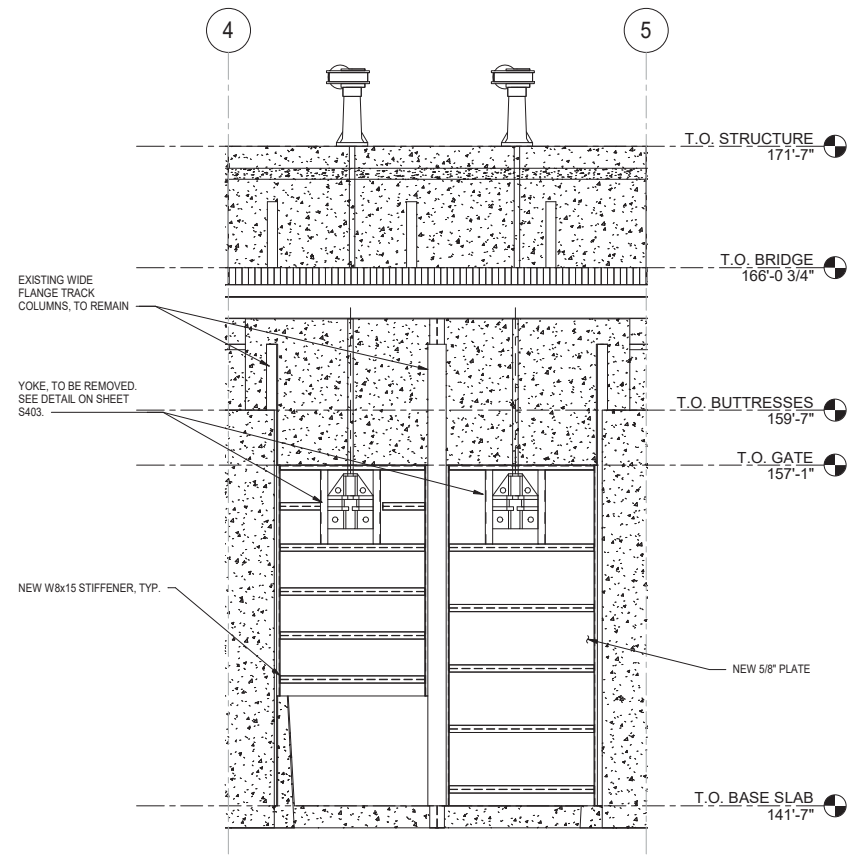
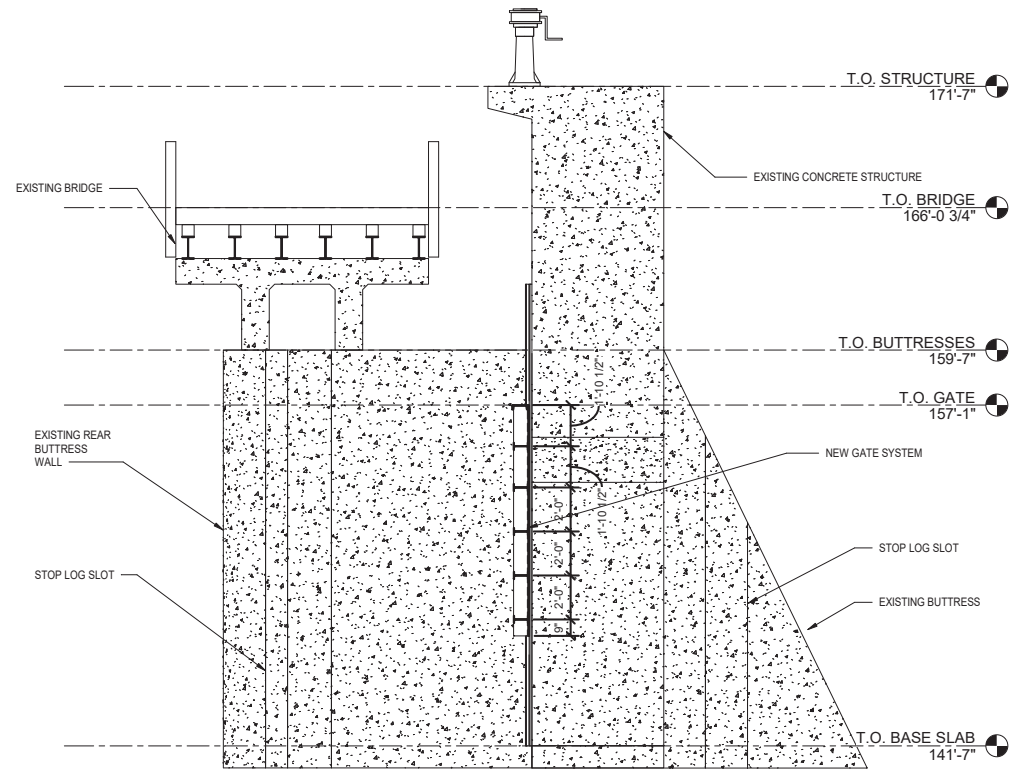
DRAWN BY:	HJM
CHECKED BY:	DKR
APPROVED BY:	DKR
DATE:	09.24.2021
SCALE:	AS SHOWN
JOB No.	2019-0578
DRAWING No.	S201





1 TYPICAL GATE SECTION  
S301 SCALE: 1/4" = 1'-0"

2 TYPICAL GATE ELEVATION  
S301 SCALE: 1/4" = 1'-0"



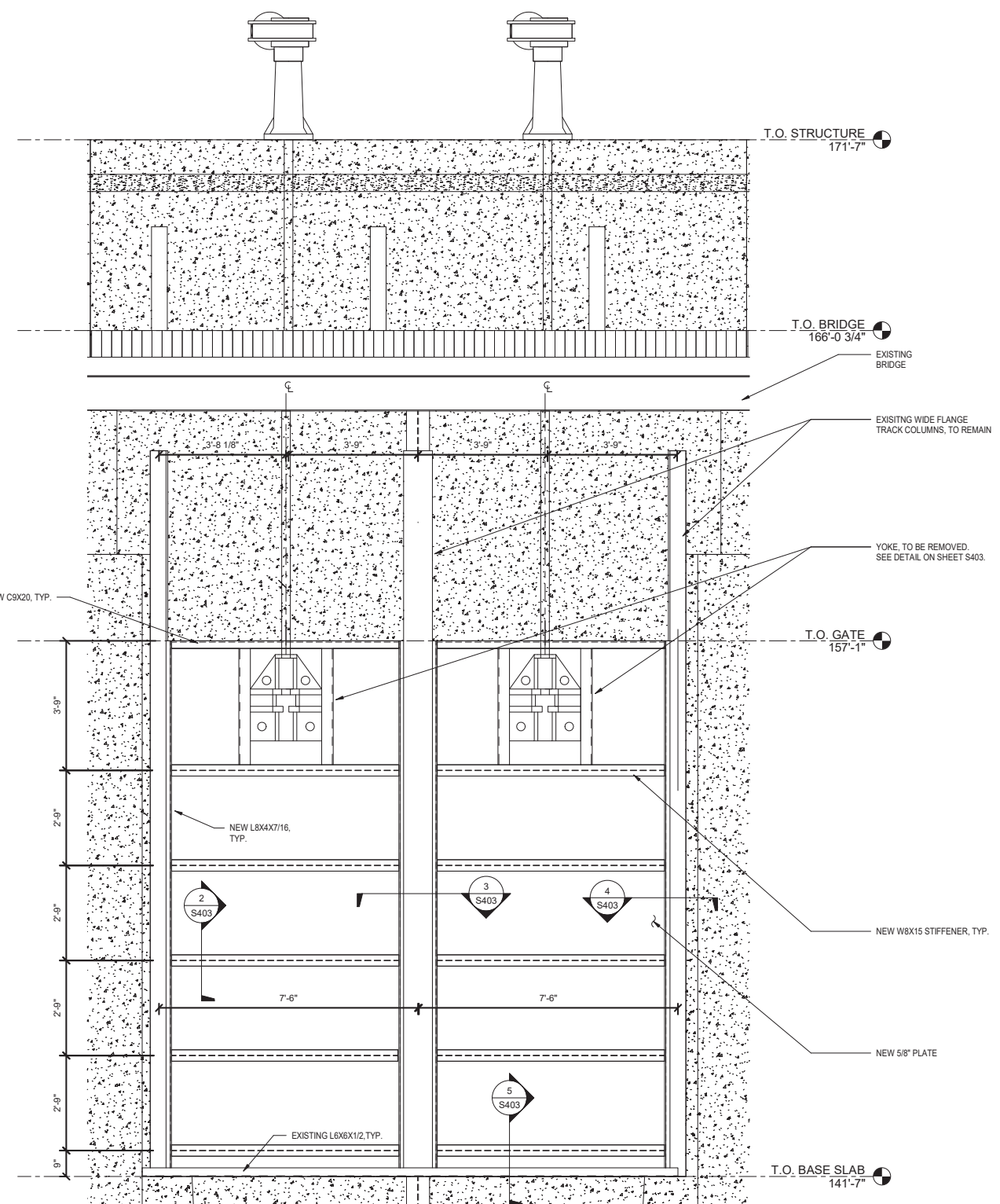
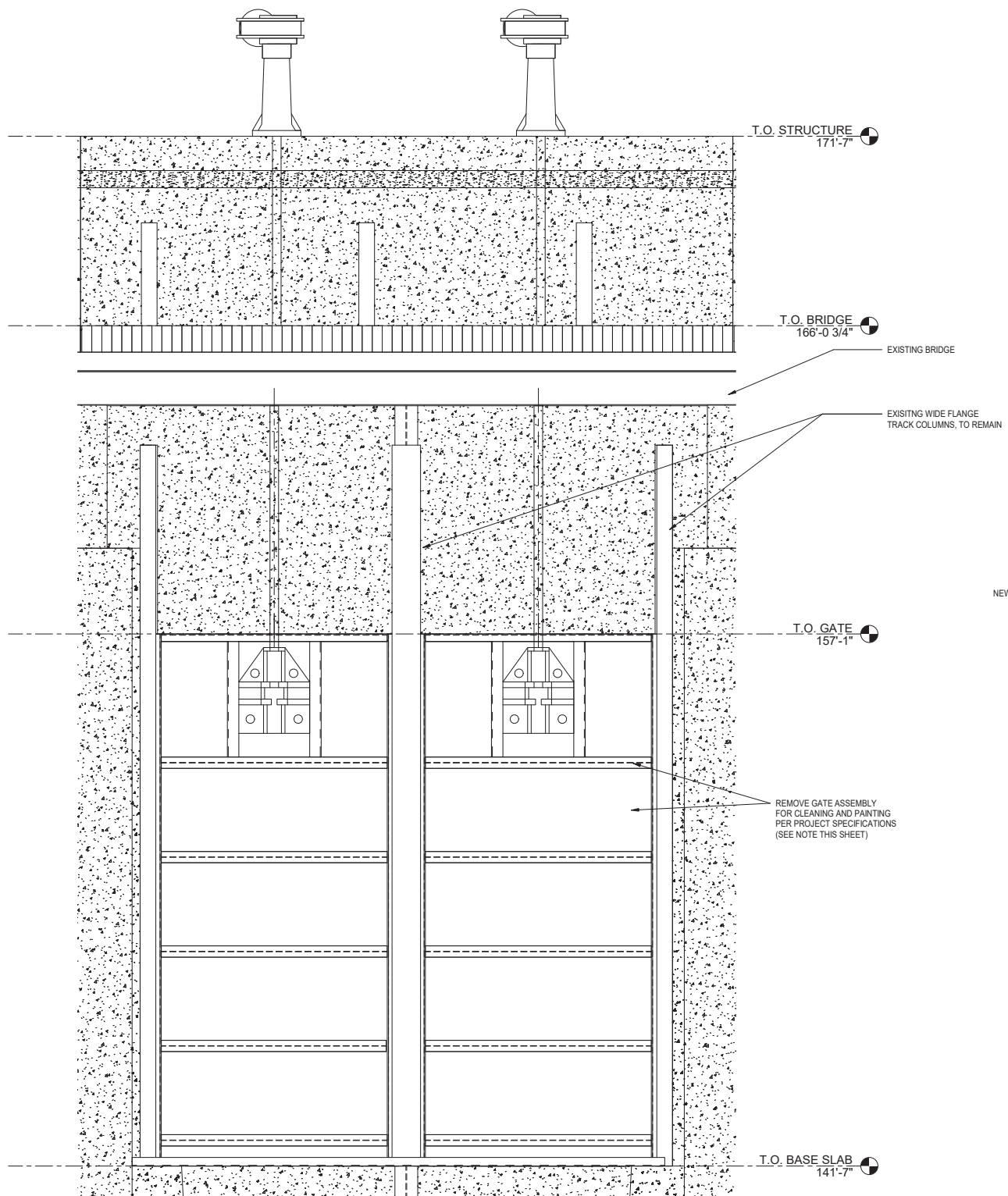
3 CONTROL GATE SECTION  
S301 SCALE: 1/4" = 1'-0"

4 CONTROL GATE ELEVATION  
S301 SCALE: 1/4" = 1'-0"

Rev.	Date	Description

AUGUSTA CANAL  
BULKHEAD GATE REPAIRS  
GATE SECTIONS AND  
ELEVATIONS

DRAWN BY:	HJM
CHECKED BY:	DKR
APPROVED BY:	DKR
DATE:	09.24.2021
SCALE:	AS SHOWN
JOB No.	2019-0578
DRAWING No.	S301



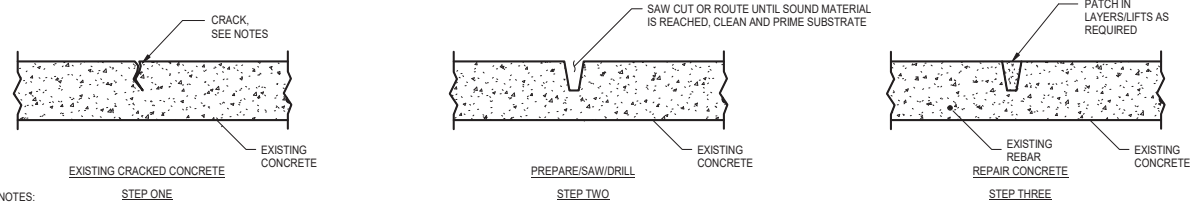
1 TYPICAL GATE REFURBISHMENT  
S401 SCALE: 1/2" = 1'-0"

2 TYPICAL GATE REPLACEMENT  
S401 SCALE: 1/2" = 1'-0"

**CLEANING AND PAINTING NOTE:**  
CONTRACTOR SHALL SUBMIT DETAILED PLAN INDICATING EQUIPMENT, PROCEDURES, METHODOLOGY, AND MEDIA USED FOR CLEANING AND PAINTING PROCEDURES. PLAN SHALL COMPLY WITH ALL FEDERAL AND LOCAL REGULATORY REQUIREMENTS INCLUDING OSHA, EPA, AND GEORGIA EPD INCLUDING ALL ENVIRONMENTAL HAZARDS/IMPACTS RELATED TO THE CANALS AND WATERWAYS. CONTRACTOR SHALL PROVIDE TEMPORARY PROTECTION, SCAFFOLDING, AND OTHER ELEMENTS AS REQUIRED TO COMPLETE THE WORK. PLAN SHALL BE SUBMITTED TO ENGINEER FOR REVIEW AND APPROVAL. FINAL PAINT SPECIFICATION TO BE SUBMITTED FOR REVIEW AND APPROVAL, AS WELL AS COLOR SELECTION.

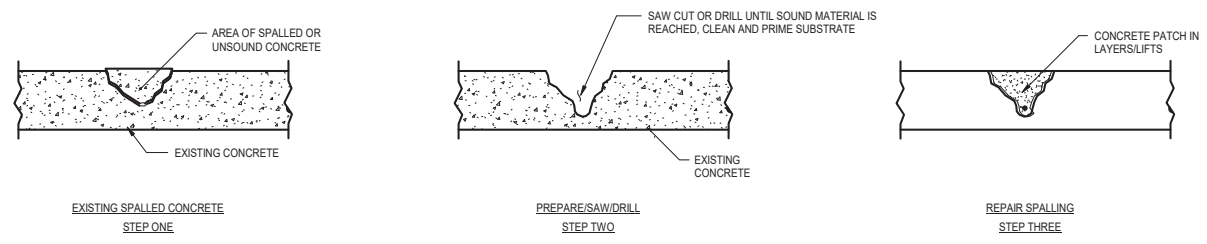
AUGUSTA CANAL  
BULKHEAD GATE REPAIRS  
STRUCTURAL DETAILS - 1

DRAWN BY:	HJM
CHECKED BY:	DKR
APPROVED BY:	DKR
DATE:	09.24.2021
SCALE:	AS SHOWN
JOB No.	2019-0578
DRAWING No.	<b>S401</b>



**NOTES:**  
1. PROVIDE SIKADUR 35 HI-MOD LV FOR CRACK REPAIR UP TO 1/4" WIDE

**TYPICAL CONCRETE SLAB CRACK REPAIR DETAIL**



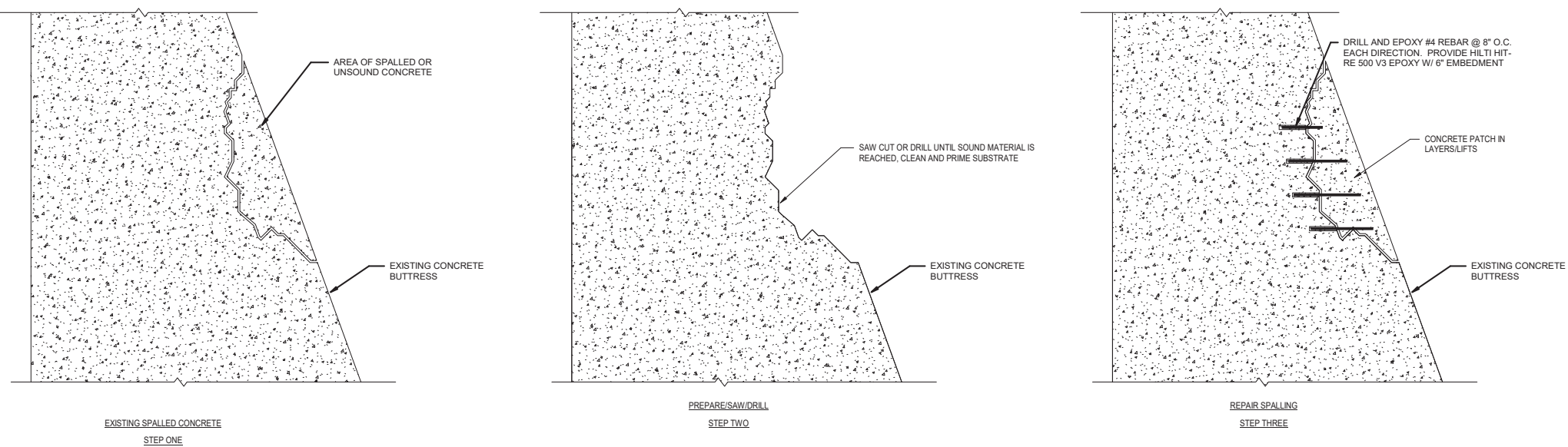
**REPAIR AT SPALLS AND DELAMINATIONS**

**NOTES:**  
1. PRIMER FOR SUBSTRATE SHALL CONSIST OF SIKADUR 32 HI-MOD BONDING AGENT.  
2. PROVIDE SIKAREPAIR 222 (MORTAR) FOR REPAIR OF ALL HORIZONTAL SPALLING CONCRETE SURFACES AND SIKAREPAIR 223 FOR OVERHEAD AND VERTICAL SURFACE.

**EPOXIES FOR REPAIRS:**

**NOTES:**  
1. EPOXIES AND SEALANTS SHALL BE SIKA PRODUCTS.  
2. THE SIKA REPRESENTATIVE SHALL VERIFY THE PROPER PRODUCT IS BEING USED FOR THE PROPER REPAIR.  
- INJECTION RESIN FOR CONCRETE SHALL BE SIKADUR 35 HI-MOD LV.  
- SPALL REPAIRS HORIZONTAL SHALL BE SIKAREPAIR 222 FOR HORIZONTAL SURFACES, AND SIKAREPAIR 223 FOR OVERHEAD AND VERTICAL SURFACES.

**1** CONCRETE CRACK AND SPALL REPAIR DETAILS  
S402 SCALE: 1" = 1'-0"



**NOTES:**  
1. PRIMER FOR SUBSTRATE SHALL CONSIST OF SIKADUR 32 HI-MOD BONDING AGENT.  
2. PROVIDE SIKAREPAIR 222 (MORTAR) FOR REPAIR OF ALL HORIZONTAL SPALLING CONCRETE SURFACES AND SIKAREPAIR 223 FOR OVERHEAD AND VERTICAL SURFACE.

**EPOXIES FOR REPAIRS:**

**NOTES:**  
1. EPOXIES AND SEALANTS SHALL BE SIKA PRODUCTS.  
2. THE SIKA REPRESENTATIVE SHALL VERIFY THE PROPER PRODUCT IS BEING USED FOR THE PROPER REPAIR.  
- INJECTION RESIN FOR CONCRETE SHALL BE SIKADUR 35 HI-MOD LV.  
- SPALL REPAIRS HORIZONTAL SHALL BE SIKAREPAIR 222 FOR HORIZONTAL SURFACES, AND SIKAREPAIR 223 FOR OVERHEAD AND VERTICAL SURFACES.

**2** BUTTRESS DAMAGE REPAIR DETAILS FOR LARGE SPALLS  
S402 SCALE: 3/4" = 1'-0"

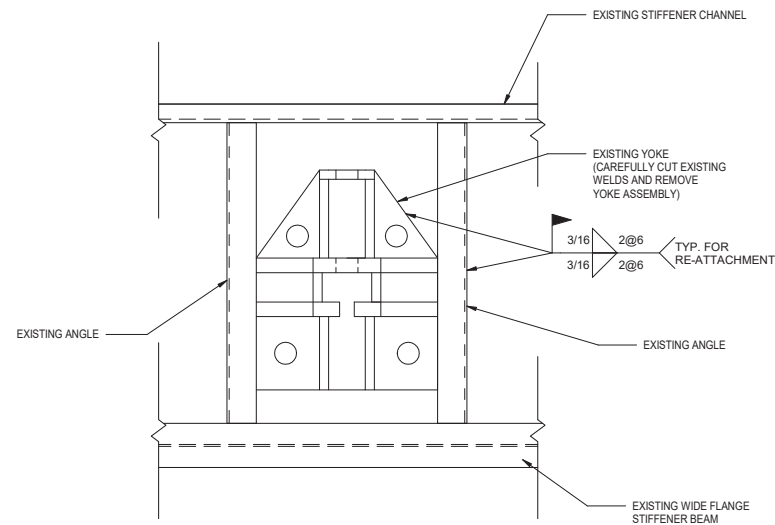


**3** EXISTING BUTTRESS SPALL  
S402 SCALE: 1/8" = 1'-0"

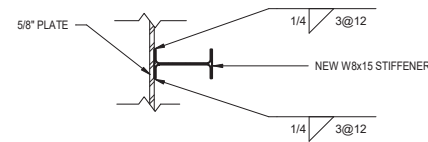
**CONCRETE REPAIR NOTES:**

- 1) FOR ALL CONCRETE REPAIRS, THE FOLLOWING SHALL BE ACHIEVED IN THE WORK: A) THE PERIMETER OF THE CONCRETE SHALL FOLLOW THE SHAPE OF THE REPAIR AREA, B) REDUCE OR MINIMIZE CORNERS AND ANGLES IN THE REPAIR AREA, AND C) AVOID ACUTE ANGLES IN THE REPAIR AREA.
- 2) ALL SAW CUTS SHALL BE PERPENDICULAR TO THE CONCRETE SURFACE WITH A MAXIMUM VARIANCE OF TEN (10) DEGREES.
- 3) THE MINIMUM COVER/CLEARANCE FROM THE FACE OF THE CONCRETE TO THE EXPOSED REBAR SHALL BE THE NOMINAL MAXIMUM AGGREGATE SIZE PLUS 1/4".
- 4) AFTER PREPARING THE CONCRETE REPAIR AREA AND PRIOR TO CONCRETE PLACEMENT, THE CONCRETE SURFACE SHALL BE PROTECTED, SUCH AS KEEPING DEBRIS FROM OTHER ACTIVITIES CONTAMINATING THE AREA, PROVIDING SHADE TO KEEP THE CONCRETE COOL, ETC.
- 5) FOR ALL REPAIR PRODUCTS AND COMPONENTS, MANUFACTURER'S RECOMMENDATIONS SHALL BE FOLLOWED FOR MIXING, PLACING, AND CURING.
- 6) CONTRACTOR SHALL DOCUMENT FOR EACH REPAIR AREA THE TYPE AND AMOUNT OF CONCRETE MATERIAL, PLACEMENT METHODS, AND CURING METHODS USED.

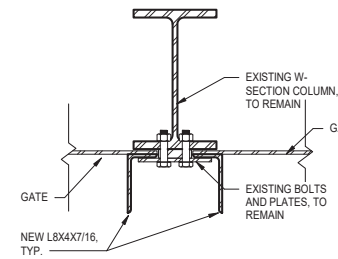
DRAWN BY:	HJM
CHECKED BY:	DKR
APPROVED BY:	DKR
DATE:	09.24.2021
SCALE:	AS SHOWN
JOB No.	2019-0578
DRAWING No.	S402



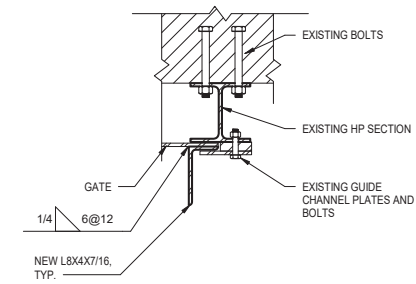
1 YOKE REMOVAL DETAIL  
S403 SCALE: 1" = 1'-0"



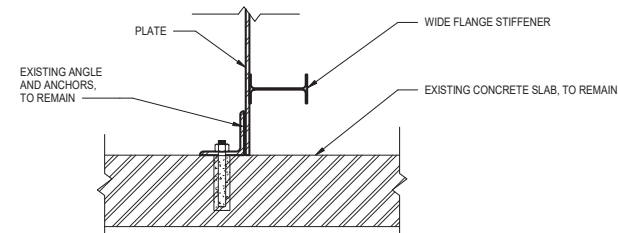
2 STIFFENER TO PLATE CONNECTION  
S403 SCALE: 1" = 1'-0"



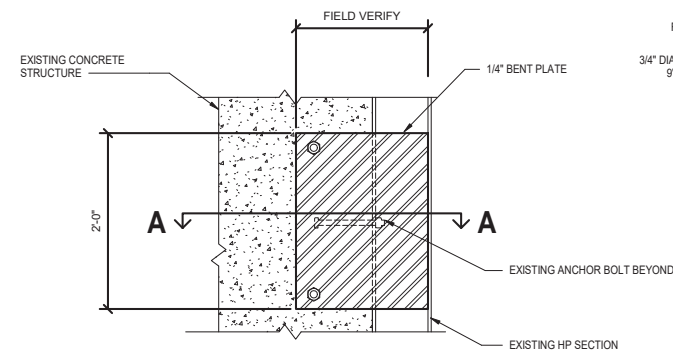
3 TYPICAL CENTER COLUMN GUIDE  
S403 SCALE: 1" = 1'-0"



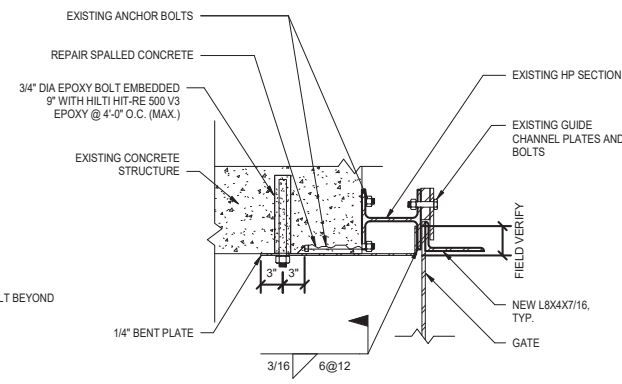
4 TYPICAL SIDE COLUMN GUIDE  
S403 SCALE: 1" = 1'-0"



5 TYPICAL ANGLE AT GATE BASE  
S403 SCALE: 1" = 1'-0"



6 TYPICAL SIDE COLUMN CONCRETE SPALL REPAIR  
S403 SCALE: 1" = 1'-0"



SECTION A-A



EXISTING CONDITION